



Simply Quality

CERTIFIED VIALS, CAPS and SEPTA



100% Certified -
Free of Defects
Quality Manufactured
Performance Guaranteed



YOUR **GLOBAL SCIENCE** PARTNER

6 Kelvin Park Birkenhead Merseyside CH41 1LT United Kingdom

Tel: +44 (0) 151 649 4000 • E: info@greyhoundchrom.com • www.greyhoundchrom.com

Greyhound Q-Range™ Chromatography Vials and Closures

Quality

Reliability

Performance



All Q-Range™ vials, inserts, caps and septa are manufactured to the highest specifications in the industry ensuring the products you receive will perform the task they are designed to do and that your analysis runs trouble free time after time.

100% Certified - Our range of vials and closures are manufactured under strict ISO specifications guaranteeing trouble free results. All Q-Range™ Certified Vials are manufactured under contract exclusively in the **USA and Europe** to ensure the highest quality materials and manufacturing standards.

100% Free from Defects - Every part we supply is checked and approved for sale to ensure consistent performance. All stages of the manufacturing processes are constantly monitored to ensure that every vial, cap and septa reaches you in perfect condition.

100% Quality Manufactured - Only the highest quality glass with extremely low ion content is used in the manufacture of Q-Range vials - 33-Expansion clear glass (USP1 Type 1 borosilicate, Class A) and 51A-Expansion amber glass (USP Type 1 borosilicate, Class B).

100% Performance Guarantee - Every vial, cap and septa is manufactured to meet precise tolerances from the top of the vial to its base, from the diameter of the cap to the thickness of the septa, every aspect of the manufacturing journey is monitored to ensure the products you receive are exactly right for your application, will fit your instrument perfectly, and perform to the highest standards, saving you laboratory time, maximising productivity and avoiding instrument downtime and loss of important samples.





Q-Clean™ Vials - Greyhound Q-Clean Vials are one of the most popular ranges of vials in the industry. Every box of vials manufactured and packaged to this new specification is identified with the **Q-Clean™** label.

Q-Clean™ vials are packaged in a certified cleanroom immediately after passing through the annealing oven at approx. 600°C. These extremely hygienic conditions are pharmaceutical standard clean rooms, and the manufacturing and packaging process is the latest cleanliness standard for chromatography vials.

By selecting **Q-Clean™** vials for your analysis, you can be confident that the vials you are using are not just clean, but are free of micro contaminants to guarantee the highest levels of performance for your analysis.

Q-Sep™ Septa - are the cleanest septa available. With no peak interferences, these septa are a softer material, Shore A 38, compared to Shore A 45 for other septa, which makes penetration much easier. These septa which are exclusive to the Q-Range, are the most popular choice for many laboratories.

3 CERTIFICATION LEVELS

- **Certified**
- **LC Certified**
- **MS Certified**

Standard Certification - The entire Q-Range of Vials and Closures are manufactured under our strict ISO specifications ensuring the quality of every product gives trouble free results.

All products are guaranteed defect free to ensure peak performance

Every lot is fully traceable throughout its manufacturing process

All Q-Range Vials and Closures are packaged under clean room conditions to ensure contaminant free products. (For **Q-Clean™** vials please see additional product details above)

LC Certification - Our LC Certified Vial Kits provide the assurance of using particulate free vials for sample preparation.

Certification includes testing for -

- Glass quality
- Dimension accuracy
- Cap/Septa specifications
- Full chemical test by HPLC and GC.

Mass Spec Certification - Our MS Certified Vial Kits provide the assurance of using particulate free vials for sample preparation.

Certification includes testing for -

- Glass quality
- Dimension accuracy
- Cap/Septa specifications
- GC/MS Background Test
- LC/MS Background Test
- Particle Counts

Our extensive range of Certified EPA/VOC and TOC Vials and Closures can be found on pages 46 to 52



INDEX

8mm Standard Mouth, Crimp Top Micro-Vials	5	
8mm Standard Mouth, Screw Top Vials	6 - 9	
8mm SQW Micro Insert Vials	9	
9mm Wide Mouth, Short Thread, Screw Top Vials	10 - 19	
10mm Wide Mouth, Screw Top Vials	20 - 22	
11mm Wide Mouth, Crimp Top Vials	23 - 27	
11mm Wide Mouth, Crimp / Snap Top Vials	28 - 32	
13mm Crimp / Snap Top Vials (for Waters WISP & Shimadzu)	33	
13mm Screw Top Vials (for Waters WISP & Shimadzu)	34 - 35	
15mm Screw Top Vials	36	
Shell Vials	37	
Headspace Vials	38 - 45	
VOA (EPA), TOC & Storage Vials, Caps and Liners	46 - 52	
Vial Racks	52	
Injection Vials 13mm & 20mm Crimp Top	53 - 55	
Snap Cap Vials, 18mm & 22mm Cap	56	
Manual & Electronic Crimpers / Decappers	57	
Vial Compatibility Chart	58 - 63	

Please view the website - www.greyhoundchrom.com for -

- Additional information and alternative pack sizes.
- Vial Accessories and other chromatography products

**Special pricing is available for bulk and call-off orders,
please contact our sales team for a quotation**

ORDERING INFORMATION

Orders can be placed by -

Post, Phone, Email or Online



YOUR **GLOBAL SCIENCE** PARTNER

Greyhound Chromatography
and Allied Chemicals
6 Kelvin Park, Birkenhead
Merseyside, CH41 1LT
United Kingdom

Tel: (+44) 0 151 649 4000

Fax: (+44) 0 151 649 4001

E: info@greyhoundchrom.com

www.greyhoundchrom.com

Crimp Top Micro-Vials, 8mm Crimp Finish

Our range of Crimp Top Micro-Vials are ideal for micro-sampling trace analysis, environmental and clinical analysis. With residual volumes as low as 3µl on some vials they are perfect when operating with very small samples.

Note: some Micro-Vials require the use of an adapter to run in the autosampler due to having a Tapered Base.



Cat. No.	Description	Dimensions (mm)	Unit
60-113207	200µL Tapered Crimp Top Micro-Vial, Clear Glass	5.5 x 31.5	100
60-113206	300µL Crimp Top Micro-Vial, Clear Glass, round bottom	5.5 x 31.5	100
60-113209	400µL Tapered Crimp Top Micro-Vial, Amber Glass	7 x 30	100
60-113200	700µL Tapered Crimp Top Micro-Vial, Clear Glass	7 x 40	100
60-113200-A	700µL Tapered Crimp Top Micro-Vial, Amber Glass	7 x 40	100
60-113201	700µL Crimp Top Vial, Clear Glass	7 x 40	100
60-113201-A	700µL Crimp Top Vial, Amber Glass	7 x 40	100
60-113203	800µL Crimp Top Vial, Clear Glass	8.2 x 30	100
60-113204	1.2ml Crimp Top Vial, Clear Glass	8.2 x 40	100
60-113204-A	1.2ml Crimp Top Vial, Amber Glass	8.2 x 40	100

Crimp & Snap Caps with Pre-fitted Septa - 8mm

These high specification Aluminium Crimp Caps are for use with vials having an 8mm crimp top neck finish.

They are available with a variety of septa materials to suit a wide range of samples and analysis conditions.



Cat. No.	Description	Unit
CRIMP CAPS		
60-113228	8mm Aluminium Crimp Cap, (Silver) with PTFE Septa, 0.25mm (Shore A 53)	100
60-113221	8mm Aluminium Crimp Cap, (Silver) with Clear PTFE/Natural Rubber Septa, 1mm (Shore A 60)	100
60-113222	8mm Aluminium Crimp Cap, (Silver) with Clear PTFE/Red Rubber Septa, 1mm (Shore A 45)	100
60-113226	8mm Aluminium Crimp Cap, (Silver) with Beige PTFE/Red Rubber Septa, 1mm (Shore A 45)	100
60-113229	8mm Aluminium Crimp Cap, (Silver) with Beige PTFE/Cream Silicone Q-SEP™ Septa, 1mm (Shore A 38)	100
60-113220	8mm Aluminium Crimp Cap, (Silver) with Red PTFE/White Silicone Septa, 1.3mm (Shore A 45)	100
60-113224	8mm Aluminium Crimp Cap, (Silver) with Red PTFE/White Silicone Septa, 1.3mm, Pre-Slit (Shore A 45)	100
60-113227	8mm Aluminium Crimp Cap, (Silver) with Red PTFE/ Cream Silicone Septa, 1.5mm (Shore A 55)	100
60-113223	8mm Aluminium Crimp Cap, (Silver) with Red PTFE/White Silicone/Red PTFE Septa, 1mm (Shore A 45)	100
60-113225	8mm Aluminium Crimp Cap, (Silver) with Black Viton 1A Septa, 1.5mm (Shore A 70)	100
60-113230	8mm Aluminium Crimp Cap, (Silver) with Black Viton 1A Septa, 1mm (Shore A 70)	100
SNAP CAPS		
60-113240	8mm Snap Cap (Clear) with PTFE Septa, 0.25mm (Shore A 53)	100
60-113241	8mm Snap Cap (Clear) with PTFE/Butyl Septa	100
60-113242	8mm Snap Cap (Clear) with Red PTFE/White Silicone Septa, 1.3mm (Shore A 45)	100
60-113243	8mm Snap Cap (Clear) with Red PTFE/White Silicone/Red PTFE Septa, 1mm (Shore A45)	100
60-113244	8mm Snap Cap (Clear) with Red PTFE/White Silicone Septa, 1.3mm, Pre-Slit (Shore A 45)	100

Standard Opening Screw Top Vials, 8-425mm Thread

Standard Opening Screw Thread Vials use an 8-425mm screw cap and septa.

They are suitable for a wide range of autosamplers including Agilent, Beckman, CTC, Gilson, Knauer, Shimadzu, Spark, Varian, VWR (Merck/Hitachi), etc which accommodate the narrow neck vials.

Manufactured from Type 1 borosilicate glass.



Cat. No.	Description	Dimensions (mm)	Unit
60-100106	2.0mL Clear Vial, Q-Clean	12 x 32	100
60-100106-A	2.0mL Amber Vial, Q-Clean	12 x 32	100
60-100110	2.0mL Clear Vial, with White Graduated Write-on Patch, Q-Clean	12 x 32	100
60-100110-A	2.0mL Amber Vial, with White Graduated Write-on Patch Q-Clean	12 x 32	100

Micro Volume and Fused Insert Screw Top Vials, 8mm

The tapered bottom of the **Micro Volume Vials** allow for the concentration of samples into the tip by solvent evaporation. Residual volumes as low as 4µL



Standard Opening **Fused Insert Vials** consist of a standard 8-452mm vial and a clear glass limited volume insert fused together. This eliminates any movement of the insert within the vial and potential of needle damage.

Manufactured from Type 1 borosilicate glass.

Cat. No.	Description	Dimensions (mm)	Unit
Micro Volume Vials			
60-113015	1.1mL Screw Top Vial, Tapered Bottom with flat base, Clear Glass	12 x 32	100
60-113015-A	1.1mL Screw Top Vial, Tapered Bottom with flat base, Amber Glass	12 x 32	100
60-100080	1.1mL Screw Top Vial, Tapered Bottom, Clear Glass	12 x 32	100
60-113017	1.1mL Screw Top Microliter Vial, Clear Glass, Q-Clean	12 x 32	100
60-113017-A	1.1mL Screw Top Microliter Vial, Amber Glass, Q-Clean	12 x 32	100
Fused Insert Vials			
60-100019	100µL Screw Top Fused Insert Vial, Clear Glass	12 x 32	100
60-100019-A	100µL Screw Top Fused Insert Vial, Amber Glass	12 x 32	100
60-100021	100µL Screw Top Fused Insert Vial, Clear Glass with Write-on Patch	12 x 32	100
60-100021-A	100µL Screw Top Fused Insert Vial, Amber Glass with Write-on Patch	12 x 32	100

Limited Volume Inserts for Screw Top Vials, 8mm

Glass Inserts are available for stand alone use and some for use in combination with a spring. Springs act as a shock absorber, protecting the vial against breakage in case the needle should 'bottom out' in the vial.

Cat. No.	Description	Dimensions (mm)
60-113040	50µL Tapered Glass Insert, Clear Glass (Requires Spring 60-113045)	4 x 27.5
60-113045	Metal Spring for Tapered Glass Insert 60-113040	
60-113041	150µL Tapered Glass Insert, Clear Glass	5 x 31
60-113042	150µL Tapered Glass Insert with plastic spring, Clear Glass	5 x 29
60-113043	200µL Tapered Glass Insert, Clear Glass	5 x 31
60-113044	200µL Glass Insert, Flat Base, Clear Glass	5 x 31



(Supplied in packs of 100)

Limited Volume Screw Top Polypropylene & TPX Vials, 8mm

Polypropylene vials are economical alternatives to glass. They are lightweight and have a good resistance to chemicals. TPX vials provide the clarity of glass and safety of polypropylene, and can withstand maximum temperature up to 175°C

An excellent choice for biological applications and for applications which involve samples with a high metal content such as AA, ICP-MS and ion chromatography.

These Limited Volume vials enable maximum retrieval of the sample.



Cat. No.	Description	Dimensions (mm)	Unit
60-100002	100µL Screw Top Polypropylene Limited Volume Vial	12 x 32	100
60-100003	100µL Screw Top Clear Polypropylene Limited Volume Vial	12 x 32	100
60-100004	100µL Screw Top TPX (Polymethylpentene) Limited Volume Vial	12 x 32	100
60-100083	1.5mL Screw Top Polypropylene Vial	12 x 32	100

Screw Caps, Open Top, 8mm

Polypropylene screw caps are designed for use with all autosamplers and accept a range of Septa available separately.

Standard autosamplers use caps with straight sides.

Older versions of Shimadzu instruments use caps with a flanged bottom



Cat. No.	Description	Unit
Standard Autosamplers		
60-100832	8-425mm Open Top Screw Cap, Black Polypropylene, Flangeless for standard autosamplers	100
60-100832-W	8-425mm Open Top Screw Cap, White Polypropylene, Flangeless for standard autosamplers	100
Older Shimadzu Autosamplers		
60-100825	8-425mm Open Top Screw Cap, Black Polypropylene with Flange for Shimadzu	100
60-100825-W	8-425mm Open Top Screw Cap, White Polypropylene with Flange for Shimadzu	100
Solid Top Caps		
60-100833	8-425mm Solid Top Screw Cap, Black Polypropylene, Unlined	100
60-100833-W	8-425mm Solid Top Screw Cap, White Polypropylene, Unlined	100

Septa for Screw Caps, 8mm

Septa for 8-425mm screw caps are supplied in a range of materials.

Other materials are available on request.



Cat. No.	Description	Unit
60-101200	White PTFE, 8mm x 0.20mm (Shore A 53)	100
60-110760	Clear PTFE/Natural Rubber, 8mm x 1mm (Shore A 60)	100
60-101209	Clear PTFE/Red Rubber, 8mm x 1mm (Shore A 45)	100
60-101242	Red PTFE/White Silicone, 8mm x 1.3mm (Shore A 45)	100
60-110763	Red PTFE/Cream Silicone, 8mm x 1.5mm (Shore A 55)	100
60-101218	Red PTFE/White Silicone/Red PTFE, 8mm x 1mm (Shore A 45)	100
60-110762	Blue PTFE/White Silicone, 8mm x 1.5mm, Pre-Slit, (Shore A 55)	100
60-110761	Blue PTFE/White Silicone, 8mm x 0.9mm, Pre-Slit, (for Merck Hitachi) (Shore A 55)	100
60-101204	Grey PTFE/Cream Butyl, 8mm x 1.3mm (Shore A 55)	100
60-110765	White PTFE/Blue Silicone, 8mm x 1.3mm (Shore A 35)	100
60-110764	Aluminium Foil/White Silicone, 8mm x 1.3mm (Shore A 50)	100
60-101206	Black Viton, 8mm x 1mm (Shore A 70)	100

Screw Caps with Pre-fitted Septa - 8mm

Designed to fit all instruments using standard 12 x 32mm autosamplers.

Standard caps fit all autosamplers.

Flanged caps have a wider collar and are designed to fit older Shimadzu autosamplers.



Cat. No.	Description	Unit
Standard Open Top Screw Caps (for all autosamplers)		
60-101319	8-425mm Open Top Screw Cap, Clear Polypropylene with Moulded Thinned Penetration Area	100
60-101329	8-425mm Open Top Screw Cap, Black Polypropylene with Clear PTFE/Natural Rubber Septa, 1.3mm (Shore A 60)	100
60-101321	8-425mm Open Top Screw Cap, Black Polypropylene with Clear PTFE/Red Rubber Septa, 1mm (Shore A 45)	100
60-101330	8-425mm Open Top Screw Cap, Black Polypropylene with Grey PTFE/Red Butyl Septa, 1.3mm (Shore A 55)	100
60-101331	8-425mm Open Top Screw Cap, Black Polypropylene with Aluminium Foil/White Silicone Septa, 1.3mm (Shore A 50)	100
60-101353	8-425mm Open Top Screw Cap, Black Polypropylene with Red PTFE/White Silicone Septa, 1.3mm (Shore A 45)	100
60-101332	8-425mm Open Top Screw Cap, Black Polypropylene with Red PTFE/Cream Silicone Septa, 1.5mm (Shore A 55)	100
60-101333	8-425mm Open Top Screw Cap, Black Polypropylene with White PTFE/Transparent Blue Silicone Septa, 1.3mm (Shore A 35)	100
60-101325	8-425mm Open Top Screw Cap, Black Polypropylene with Red PTFE/White Silicone/Red PTFE Septa, 1mm (Shore A 45)	100
60-101344	8-425mm Open Top Screw Cap, Black Polypropylene, Red PTFE/White Silicone Septa, 1.3mm, Pre-Slit (Shore A 45)	100
60-101334	8-425mm Open Top Screw Cap, Black Polypropylene, Blue PTFE/White Silicone Septa, 1.5mm, Pre-Slit (Shore A 45)	100
Flanged Screw Caps (for older Shimadzu autosamplers)		
60-101320	8-425mm Flanged Open Top Screw Cap, Black Polypropylene with PTFE/Red Rubber Septa, 1mm (Shore A 45)	100
60-101351	8-425mm Flanged Open Top Screw Cap, Black Polypropylene with Red PTFE/White Silicone Septa, 1.3mm (Shore A 45)	100
60-101324	8-425mm Flanged Open Top Screw Cap, Black Polypropylene with Red PTFE/White Silicone/Red PTFE Septa, 1mm (Shore A 45)	100
60-101343	8-425mm Flanged Open Top Screw Cap, Black Polypropylene, Red PTFE/White Silicone Septa, 1.3mm, Pre-Slit (Shore A 45)	100
Standard Solid Top Screw Caps		
60-101380	8-425mm Solid Top Screw Cap, Black Polypropylene, Clear PTFE/Natural Rubber Septa, 1.3mm (Shore A 60)	100
60-101381	8-425mm Solid Top Screw Cap, Black Polypropylene, Beige PTFE/Red Rubber Septa, 1mm (Shore A 45)	100
60-101382	8-425mm Solid Top Screw Cap, Black Polypropylene, Grey PTFE/Cream Butyl Septa, 1.3mm (Shore A 55)	100
60-101383	8-425mm Solid Top Screw Cap, Black Polypropylene, Red PTFE/White Silicone Septa, 1.3mm, Pre-Slit (Shore A 45)	100

Vial Kits - Screw Top, 8mm

Vial Kits consist of selected vials and pre-assembled caps and Septa which are packaged in an easily accessible tray.

The kits are ideal for storing in a bench drawer and keep the components visible and particle free



Cat. No.	Description	Dimensions (mm)	Unit
Standard Caps			
60-101460	Vial Kit - P/Nos. 60-100106 and 60-101353 2.0mL Vial, Screw Top, Clear Glass + 8-425mm Standard Black Open Top Polypropylene Cap with Red PTFE/Silicone Septa, 1.3mm, Q-Clean	12 x 32	100
60-101460-A	Vial Kit - P/Nos. 60-100106-A and 60-101353 2.0mL Vial, Screw Top, Amber Glass + 8-425mm Standard Black Open Top Polypropylene Cap with Red PTFE/Silicone Septa, 1.3mm, Q-Clean	12 x 32	100
Flanged Caps			
60-101458	Vial Kit - P/Nos. 60-100106 and 60-101351 2.0mL Vial, Screw Top, Clear Glass + 8-425mm Flanged Black Open Top Polypropylene Cap with Red PTFE/Silicone Septa, 1.3mm, Q-Clean	12 x 32	100
60-101458-A	Vial Kit - P/Nos. 60-100106-A and 60-101351 2.0mL Vial, Screw Top, Amber Glass + 8-425mm Flanged Black Open Top Polypropylene Cap with Red PTFE/Silicone Septa, 1.3mm, Q-Clean	12 x 32	100

SQW Micro Insert Vials & Snap Caps, 8mm

SQW (Square Well Block) Vials are designed to fit 96-Square Deep Well Plates.

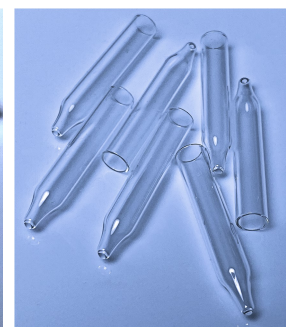
Glass vials provide an inert solvent resistant environment for samples.

Round and Tapered designs allow sample access down to 10µL

Compatible with autosamplers and robotic systems



60-120000



60-120001

Part No.	Description	Unit
SQW Micro Inert Vials		
60-120000	1ml SQW Micro-Insert, 45.9mm x 7.6mm, clear glass, 1st hydrolytic class, round bottom	100
60-120001	1ml SQW Micro-Insert, 45.9mm x 7.6mm, clear glass, 1st hydrolytic class, tapered bottom	100

8mm Snap Caps

60-113242	8mm Snap Cap (Clear) with Red PTFE/White Silicone Septa, 1.3mm *	100
60-113243	8mm Snap Cap (Clear) with Red PTFE/White Silicone/Red PTFE Septa, 1mm	100
60-113244	8mm Snap Cap (Clear) with Red PTFE/White Silicone Septa, 1.3mm, Pre-Slit *	100

* Caps are also available in Red - please add (-R) to part number when ordering

Wide Mouth Screw Top Vials, 9mm Thread

Wide Mouth Short Thread Vials have the same cap height as crimp cap vials and are designed to work with robotic arm autosamplers (Agilent, CTC, Perkin Elmer, Thermo Scientific and Waters) but have the advantages of being screw thread.

Manufactured of Type 1 borosilicate glass



Cat. No.	Description	Dimension (mm)	Unit
60-100116	2.0mL Wide Mouth Short Thread Vial, Clear Glass, Q-Clean	12 x 32	100
60-100116-Z	2.0mL Wide Mouth Short Thread Vial, Clear Glass, Silanised, Q-Clean	12 x 32	100
60-100116-A	2.0mL Wide Mouth Short Thread Vial, Amber Glass, Q-Clean	12 x 32	100
60-100120	2.0mL Wide Mouth Short Thread Vial, Clear Glass with Graduated Write-on Patch, Q-Clean	12 x 32	100
60-100120-Z	2.0mL Wide Mouth Short Thread Vial, Clear Glass with Graduated Write-on Patch, Q-Clean , Silanised	12 x 32	100
60-100120-A	2.0mL Wide Mouth Short Thread Vial, Amber Glass with Graduated Write-on Patch, Q-Clean	12 x 32	100
60-100120-A-Z	2.0mL Wide Mouth Short Thread Vial, Amber Glass with Graduated Write-on Patch, Q-Clean , Silanised	12 x 32	100

Wide Mouth Micro Volume Screw Top Vials, 9mm

The tapered bottom of the vials allow for the concentration of samples into the tip by solvent evaporation.

Manufactured from clear Type 1 borosilicate glass.

Residual volumes as low as 1µL (60-113019)



Cat. No.	Description	Dimensions (mm)	Unit
60-113019	0.9mL Screw Top Wide Mouth High Recovery Vial, Clear Glass	12 x 32	100
60-113022	1.1mL Screw Top Wide Mouth Vial, Tapered Bottom with flat base, Clear Glass	12 x 32	100
60-113022-A	1.1mL Screw Top Wide Mouth Vial, Tapered Bottom with flat base, Amber Glass	12 x 32	100
60-113020	1.1mL Screw Top Wide Mouth Microliter Vial, Clear Glass, Q-Clean	12 x 32	100
60-113020-Z	1.1mL Screw Top Wide Mouth Microliter Vial, Clear Glass, Q-Clean , Silanised	12 x 32	100
60-113020-A	1.1mL Screw Top Wide Mouth Microliter Vial, Amber Glass	12 x 32	100

Wide Mouth Fused Insert Screw Top Vials, 9mm

Fused Insert Vials consist of a standard Wide Mouth Screw Top Vial and a clear glass limited volume insert fused together.

This eliminates any movement of the insert within the vial and potential needle damage.

Manufactured from Type 1 borosilicate glass.



Cat. No.	Description	Dimensions (mm)	Unit
60-100026	200µL Wide Mouth Fused Insert Vial, Top Bonded, Clear Glass, with Write-on Patch	12 x 32	100
60-100026-A	200µL Wide Mouth Fused Insert Vial, Top Bonded, Amber Glass, with Write-on Patch	12 x 32	100
60-100028	250µL Wide Mouth Fused Insert Vial, Base Bonded, Clear Glass, 9mm Thread, Q-Clean	12 x 32	100
60-100028-A	250µL Wide Mouth Fused Insert Vial, Base Bonded, Amber Glass, 9mm Thread, Q-Clean	12 x 32	100
60-100027	350µL Wide Mouth Fused Insert Vial, Base Bonded, Clear Glass, 9mm Thread, Q-Clean	12 x 32	100
60-100027-A	350µL Wide Mouth Fused Insert Vial, Base Bonded, Amber Glass, 9mm Thread, Q-Clean	12 x 32	100

Wide Mouth Polypropylene & TPX Screw Top Vials, 9mm

Polypropylene vials are economical alternatives to glass. They are lightweight and have a good resistance to chemicals. An excellent choice for biological applications and for applications which involve samples with a high metal content such as AA, ICP-MS and ion chromatography

These Limited Volume vials enable maximum retrieval of the sample.



Cat. No.	Description	Dimensions (mm)	Unit
60-100007	300µL Wide Mouth Short Thread Screw Top Polypropylene Vial *	12 x 32	100
60-100007-A	300µL Wide Mouth Short Thread Screw Top Polypropylene Vial, Amber *	12 x 32	100
60-100007-BK	300µL Wide Mouth Short Thread Screw Top Polypropylene Vial, Black *	12 x 32	100
60-100007-CP	300µL Wide Mouth Short Thread Screw Top Clear Polypropylene Vial *	12 x 32	100
60-100007-TPX	300µL Wide Mouth Short Thread Screw Top TPX (Polymethylpentene) Vial	12 x 32	100
60-100053	500µL Wide Mouth Short Thread Screw Top Polypropylene Vial *	12 x 32	100
60-100053-A	500µL Wide Mouth Short Thread Screw Top Polypropylene Vial, Amber *	12 x 32	100
60-100053-BK	500µL Wide Mouth Short Thread Screw Top Polypropylene Vial, Black *	12 x 32	100
60-100053-PK	500µL Wide Mouth Short Thread Screw Top Polypropylene Vial, Pink *	12 x 32	100
60-100068	700µL Wide Mouth Short Thread Screw Top Polypropylene Vial *	12 x 32	100
60-100087	1.5mL Wide Mouth Short Thread Screw Top Polypropylene Vial, Transparent *	12 x 32	100
60-100087-A	1.5mL Wide Mouth Short Thread Screw Top Polypropylene Vial, Amber *	12 x 32	100
60-100087-BK	1.5mL Wide Mouth Short Thread Screw Top Polypropylene Vial, Black *	12 x 32	100
60-100008	1.7mL Wide Mouth Short Thread Screw Top Polypropylene Vial *	12 x 32	100

* These Polypropylene vials are all suitable for PFAS analysis

Limited Volume Inserts for Screw Top Vials, 9mm

Inserts are available in Glass or Polypropylene. Some are supplied pre-assembled with a polymer bottom spring which acts as a shock absorber protecting the vial against breakage in case the needle should 'bottom out' in the vial.



Cat. No.	Description	Dimensions (mm)	Unit
60-113050	250µL Tapered Glass Insert, Clear Glass	6 x 31	100
60-113050-Z	250µL Tapered Glass Insert, Clear Glass, Silanized	6 x 31	100
60-113051	300µL Tapered Glass Insert, Clear Glass	6 x 31	100
60-113051-Z	300µL Tapered Glass Insert, Clear Glass	6 x 31	100
60-113052	400µL Glass Insert - Flat bottom, Clear Glass	6 x 31	100
60-113052-Z	400µL Glass Insert - Flat bottom, Clear Glass, Silanized	6 x 31	100
60-113053	250µL Tapered Glass Insert with plastic bottom spring, Clear Glass	5.7 x 29	100
60-113053-Z	250µL Tapered Glass Insert with plastic bottom spring, Clear Glass, Silanized	5.7 x 29	100
60-113056	250µL Tapered Polypropylene Insert with plastic spring, Clear	6 x 29	100

Screw Thread Caps for High Temperature and Trace Analysis, 9mm

- 9mm Short Thread seals with high purity PTFE or Aluminium septa
- Excellent choice for GC-MS and LC-MS applications
- O-ring ensures 100% tightness



Cat. No.	Description	Unit
Screw Caps		
60-101092-B	9mm Open Top Screw Cap, Blue with Aluminium Septa, 0.1mm, (Sealed by O-ring)	100
60-101092-N	9mm Open Top Screw Cap, Natural with Aluminium Septa, 0.1mm, (Sealed by O-ring)	100
60-101093-B	9mm Open Top Screw Cap, Blue with PTFE Septa, 0.20mm, (Sealed by O-ring) (Shore A 53)	100
60-101093-N	9mm Open Top Screw Cap, Natural with PTFE Septa, 0.20mm, (Sealed by O-ring) (Shore A53)	100

Screw Thread Caps and Septa for Wide Mouth Screw Top Vials, 9mm

A range of Screw Caps and Septa are available to fit 9mm Screw Top Vials



Cat. No.	Description	Unit
Screw Caps - No Septa		
60-100846	9mm Open Top Screw Cap, Black Polypropylene, Unlined *	100
60-100879	9mm Solid Top Screw Cap, Black Polypropylene, Unlined	100
Septa		
60-101201	White PTFE Septa, 9mm x 0.20mm	100
60-101211	Clear PTFE/Red Rubber Septa, 9mm x 1mm	100
60-101217	Red PTFE/White Silicone Septa, 9mm x 1mm	100
60-101219	Red PTFE/White Silicone/Red PTFE Septa, 9mm x 1mm	100
60-101222	Red PTFE/White Silicone Septa, Pre-Slit, 9mm x 1mm	100

* Caps also available in (-B) Blue, (-G) Green, (-R) Red and (-Y) Yellow - please state alternative colour required

Screw Thread Caps with Pre-fitted Septa - 9mm

Pre-assembled screw caps with ribbed outer sides are available with the most popular Septa pre-fitted.

Caps with Bonded Septa are joined at the molecular level to form an inseparable unit. They are comparable to Waters® LECTRABOND and Agilent INTERSEAL closures.

Pre-cut and Pre-slit septa - with **Pre-cut** septa only the silicone layer is slit, leaving the PTFE layer complete. This has the advantage of preventing changes in concentration which can occur with completely **Pre-slit** septa where both the Silicone and the PTFE layers are slit

Magnetic Screw Caps are polypropylene caps with a gold colour metal cap overlay similar to an 11mm Crimp Cap finish

PolyMag Magnetic Screw Caps are polypropylene caps with a built in steel overlay for use with magnetic sample transport systems



Cat. No.	Description	Unit
Open Top Polypropylene Screw Caps with Pre-fitted Septa		
60-101077	9mm Screw Cap, Transparent, with thinned penetration area	100
60-101036	9mm Open Top Screw Cap, Black with White PTFE Septa, 0.2mm (Shore A 53) *	100
60-101041	9mm Open Top Screw Cap, Black with Clear PTFE/Red Natural Rubber Septa, 1mm (Shore A 60) *	100
60-101040	9mm Open Top Screw Cap, Black with Beige PTFE/Red Rubber Septa, 1mm (Shore A 45) *	100
60-101048	9mm Open Top Screw Cap, Black with Red PTFE/White Silicone Septa, 1.3mm (Shore A 55) *	100
60-101068	9mm Open Top Screw Cap, Black with Red PTFE/White Silicone/Red PTFE Septa, 1mm (Shore A 45) *	100
60-101086	9mm Open Top Screw Cap, Black with Aluminium Foil/White Silicone Septa, 1mm (Shore A 50) *	100
60-101037	9mm Open Top Screw Cap, Black with PTFE/Butyl Rubber Septa, 1.3mm (Shore A 55) *	100
60-101035-B	9mm Open Top Screw Cap, Blue with Polyimide/White Silicone Septa for PFAS Testing , 1mm	100

* Caps also available in (-B) Blue, (-G) Green, (-N) Natural, (PK) Pink, (-R) Red and (-Y) Yellow - please state alternative colour

Cat. No.	Description	Unit
Open Top Polypropylene Screw Caps with Pre-fitted & Bonded Septa		
60-101058	9mm Open Top Screw Cap, Black with Bonded Red PTFE/White Silicone Septa, 1mm (Shore A 45)	100
60-101058-B	9mm Open Top Screw Cap, Blue with Bonded Red PTFE/White Silicone Septa, 1mm (Shore A 45)	100
60-101059-B	9mm Open Top Screw Cap, Blue with Bonded Blue PTFE/White Silicone Septa, 1mm, Pre-Slit (Shore A 45)	100
60-101060-B	9mm Open Top Screw Cap, Blue with Bonded White PTFE/Beige Silicone Septa, 1.3mm (Shore A 45)	100
60-101061-B	9mm Open Top Screw Cap, Blue with Bonded White PTFE/Beige Silicone Septa, 1.3mm, Pre-Slit (Shore A 45)	100
60-101062-B	9mm Open Top Screw Cap, Blue with Bonded White PTFE/Beige Silicone Septa, 1mm (Shore A 45)	100
60-101085	9mm Open Top Screw Cap, Black with Bonded Red PTFE/White Silicone Septa, Pre-Slit, 1mm (Shore A 45)	100
60-101085-B	9mm Open Top Screw Cap, Blue with Bonded Red PTFE/White Silicone Septa, Pre-Slit, 1mm (Shore A 45)	100

Screw Thread Caps with Pre-cut Septa - Pre-fitted, 9mm

Pre-cut and Pre-slit septa - with **Pre-cut** septa only the silicone layer is slit, leaving the PTFE layer complete. This has the advantage of preventing potential changes in concentration which can occur with completely **Pre-slit** septa



Cat. No.	Description	Unit
----------	-------------	------

Open Top Polypropylene Screw Caps with Pre-fitted Septa - Pre-Slit and Pre-Cut

60-101076	9mm Open Top Screw Cap, Black with Blue PTFE/White Silicone Septa, Pre-Slit, 1mm (Shore A 55) *	100
60-101090-N	9mm Open Top Screw Cap, Natural with Red PTFE/White Silicone Septa, Y-slit, 1mm (Shore A 55)	100
60-101090-B	9mm Open Top Screw Cap, Blue with Red PTFE/White Silicone Septa, Y-slit, 1mm (Shore A 55)	100
60-101091-N	9mm Open Top Screw Cap, Natural with Red PTFE/White Silicone Septa, Y pre-cut, 1mm (Shore A 55)	100
60-101091-B	9mm Open Top Screw Cap, Blue with Red PTFE/White Silicone Septa, Y pre-cut, 1mm (Shore A 55)	100

* Caps also available in (-B) Blue, (-G) Green, (-N) Natural, (PK) Pink, (-R) Red and (-Y) Yellow - please state colour required

Magnetic Screw Thread Caps with Pre-fitted Septa - 9mm

Magnetic Screw Caps are polypropylene caps with a gold colour metal cap overlay similar to an 11mm Crimp Cap finish

PolyMag Magnetic Screw Caps are polypropylene caps with a built in steel overlay for use with magnetic sample transport systems



Cat. No.	Description	Unit
----------	-------------	------

Magnetic Open Top Screw Caps with Pre-fitted Septa

60-100840-B	9mm Magnetic Open Top Screw Cap, Blue with Gold Cover and Red PTFE/White Silicone Septa, 1mm (Shore A 45)	100
60-100841-B	9mm Magnetic Open Top Screw Cap, Blue, with Gold Cover and Blue PTFE/White Silicone Septa, 1mm, Pre-Slit (Shore A 55)	100
60-100842-B	9mm Magnetic Open Top Screw Cap, Blue, with Gold Cover and PTFE/Natural Rubber Septa, 1mm (Shore A 60)	100
60-100966-B	9mm PolyMag Magnetic Screw Cap, Blue with Bonded Red PTFE/White Silicone Septa, 1mm (Shore A 45)	100
60-100967-B	9mm PolyMag Magnetic Screw Cap, Blue with Bonded Red PTFE/White Silicone Septa, 1mm, Pre-Slit (Shore A 45)	100
60-100968-B	9mm PolyMag Magnetic Screw Cap, Blue with Bonded Red PTFE/White Silicone/Red PTFE Septa, 1mm (Shore A 45)	100

Vial Kits - Wide Mouth Screw Top Glass Vials & Caps, 9mm

Vial Kits consist of selected vials with pre-assembled caps and Septa which are packaged in an easily accessible tray. The vials are part of our Q-Clean range. The kits are ideal for storing in a bench drawer and keep the components visible and particle free.

Kits consist of:
2ml Wide Mouth, Clear or Amber Vials with Write on Patch plus a choice of caps with pre-fitted septa.

Please select the kit which meets your individual requirements.



Instrument Suitability	Code
Agilent	1
General	2
Merck/Hitachi LC	3
Perkin Elmer LC	4
Shimadzu LC	5
Thermo GC	6
Varian GC & LC	7
Waters LC	8

Instrument Suitability	Vial Glass	Cap Colour	Cap Septa	Vial Cat. No.	Cap Cat. No.	Unit	Kit Cat. No.
2	Clear	Blue	PTFE	60-100120	60-101036-B	100	60-101465
2	Amber	Blue	PTFE	60-100120-A	60-101036-B	100	60-101465-A
1,2	Clear	Blue	Beige PTFE/Red Rubber Septa	60-100120	60-101040-B	100	60-101463
2,5	Clear	Black	Beige PTFE/Red Rubber Septa	60-100120	60-101040	100	60-101472
3,4	Clear	Blue	Blue PTFE/White Silicone, Pre-slit	60-100120	60-101076-B	100	60-101464
3,4	Amber	Blue	Blue PTFE/White Silicone, Pre-slit	60-100120-A	60-101076-B	100	60-101464-A
2,3	Clear	Blue	Clear PTFE/Red Natural Rubber	60-100120	60-101041-B	100	60-101469
2,3	Amber	Blue	Clear PTFE/Red Natural Rubber	60-100120-A	60-101041-B	100	60-101469-A
1,2,3,6,7,8	Clear	Blue	Red PTFE/White Silicone	60-100120	60-101048-B	100	60-101470
1,2,3,6,7,8	Amber	Blue	Red PTFE/White Silicone	60-100120-A	60-101048-B	100	60-101470-A
2,5	Clear	Black	Red PTFE/White Silicone	60-100120	60-101048	100	60-101471
2,5	Amber	Black	Red PTFE/White Silicone	60-100120-A	60-101048	100	60-101471-A
2,2	Clear	Blue	Red PTFE/White Silicone/Red PTFE	60-100120	60-101068-B	100	60-101475
8	Clear	Blue	White PTFE/Beige Silicone, Bonded	60-100120	60-101062-B	100	60-101474
8	Amber	Blue	White PTFE/Beige Silicone, Bonded	60-100120-A	60-101062-B	100	60-101474-A
2,8	Clear	Blue	Red PTFE/White Silicone, Bonded , Pre-slit	60-100120	60-101085-B	100	60-101476
2,8	Amber	Blue	Red PTFE/White Silicone, Bonded , Pre-slit	60-100120-A	60-101085-B	100	60-101476-A

Vial Kits - Wide Mouth Micro Volume Screw Top Glass Vials, 9mm

These Vial Kits consist of selected Micro Volume vials with pre-assembled **bonded** caps and Septa which are packaged in an easily accessible tray.

They are ideal for storing in a bench drawer and keep the components visible and particle free.

These vials are part of our Q-Clean range



Vial Glass	Capacity	Dimensions (mm)	Cap Colour	Bonded Cap Septa	Vial Cat. No.	Cap Cat. No.	Unit	Kit Cat. No.
Clear	0.35mL	12 x 32	Blue	White PTFE/Beige Silicone	60-100027	60-101060-B	100	60-101483
Clear	0.9mL	12 x 32	Blue	White PTFE/Beige Silicone, Slit	60-113019	60-101061-B	100	60-101485
Clear	1.1mL	12 x 32	Blue	White PTFE/Beige Silicone	60-113020	60-101060-B	100	60-101484

Vial Kits - Wide Mouth Screw Top Polypropylene Vials, 9mm

Polypropylene vials are economical alternatives to glass. They are lightweight and have a good resistance to chemicals.

An excellent choice for biological applications and for applications which involve samples with a high metal content such as AA, ICP-MS and ion chromatography.

SEE PAGE 19 FOR POLYPROPYLENE VIAL AND CAP KITS FOR PFAS ANALYSIS



Cat. No.	Description	Dimensions (mm)	Unit
60-101490	Vial Kit - P/Nos. 60-100087 and 60-101041-B 1.5mL Polypropylene Vial, Screw Top, Short Thread + 9mm Blue Open Top Cap with PTFE/Natural Rubber Septa	12 x 32	100
60-101491	Vial Kit - P/Nos. 60-100087 and 85-B 1.5mL Polypropylene Vial, Screw Top, Short Thread + 9mm Blue Open Top Cap with Blue PTFE/White Silicone Septa, Pre-Slit	12 x 32	100

Alternative Vial Kits can be combined to your exact specifications, please

HPLC & GC Certified Screw Top Vial Kits, 9mm

Certified Vial Kits for HPLC & GC provide the assurance of using particulate free vials for sample preparation. These vials are fully tested and meet the very high standards expected by our clients.

Vial Kits are shipped in re-closable containers and each kit includes -

- 100 Certified 2mL Screw Thread Vials
- 100 Blue Open Top 9mm Screw Caps with **bonded** septa
- Certificate of Conformance



HPLC & GC Certified Vial Test Parameters include

- **Glass** - Type 1, Class A, 33 Expansion Clear or 51A Amber Borosilicate
- **Dimensions** - Height, Diameter, Bottom Thickness, Neck Length, Thread Profile, Annealing
- **Cap/Septa** - Diameter, Height, Thread Integrity, Centre Flash, Septa Insertion
- **Chemical Test** - HPLC Test - Non-volatile residue, GC Test - Volatile Residue



Cat. No.	Description	Dimensions (mm)	Unit
60-100327	LC Certified 2mL Wide Neck Screw Top Vial, Short Thread, Clear Glass with Graduated Write-on Patch + 9mm Blue Open Top Polypropylene Screw Cap with Bonded PTFE/Silicone Septa	12 x 32	100
60-100328	LC Certified 2mL Wide Neck Screw Top Vial, Short Thread, Amber Glass with Graduated Write-on Patch + 9mm Blue Open Top Polypropylene Screw Cap with Bonded PTFE/Silicone Septa	12 x 32	100
60-100331	LC Certified 2mL Wide Neck Screw Top Vial, Short Thread, Clear Glass with Graduated Write-on Patch + 9mm Blue Open Top Polypropylene Screw Cap with Bonded PTFE/Silicone Slit Septa	12 x 32	100
60-100332	LC Certified 2mL Wide Neck Screw Top Vial, Short Thread, Amber Glass with Graduated Write-on Patch + 9mm Blue Open Top Polypropylene Screw Cap with Bonded PTFE/Silicone Slit Septa	12 x 32	100

LC/MS & GC/MS Certified Screw Top Vial Kits, 9mm

Certified Vial Kits for Mass Spec provide the assurance of using particulate free vials for sample preparation. These vials are fully tested and meet the very high standards expected by our clients.

Vial Kits are shipped in re-closable containers and each kit includes -

- 100 Certified 2mL Screw Thread Vials
- 100 Blue Open Top 9mm Screw Caps with **bonded** septa
- Certificate of Conformance

Mass Spec Certified Vial Test Parameters include

- **Glass** - Type 1, Class A, 33 Expansion Clear or 51A Amber Borosilicate
- **Dimensions** - Height, Diameter, Bottom Thickness, Neck Length, Thread Profile, Annealing
- **Cap/Septa** - Diameter, Height, Thread Integrity, Centre Flash, Septa Insertion
- **GC/MS** Background Test
- **LC/MS** Background Test
- **Particle Counts** - Particle Size, Particle/mL/Vial



Cat. No.	Description	Dimensions (mm)	Unit
60-100352	MS Certified 2mL Wide Neck Screw Top Vial, Short Thread, Clear Glass with Graduated Write-on Patch + 9mm Blue Open Top Polypropylene Screw Cap with Bonded PTFE/Silicone Septa	12 x 32	100
60-100353	MS Certified 2mL Wide Neck Screw Top Vial, Short Thread, Amber Glass with Graduated Write-on Patch + 9mm Blue Open Top Polypropylene Screw Cap with Bonded PTFE/Silicone Septa	12 x 32	100
60-100356	MS Certified 2mL Wide Neck Screw Top Vial, Short Thread, Clear Glass with Graduated Write-on Patch + 9mm Blue Open Top Polypropylene Screw Cap with Bonded PTFE/Silicone Slit Septa	12 x 32	100
60-100357	MS Certified 2mL Wide Neck Screw Top Vial, Short Thread, Amber Glass with Graduated Write-on Patch + 9mm Blue Open Top Polypropylene Screw Cap with Bonded PTFE/Silicone Slit Septa	12 x 32	100

PFAS Analysis Wide Mouth Screw Top Vial Kits, 9mm

Because Perfluoroalkyl and Polyfluoroalkyl substances do not decompose, they can accumulate over time in the environment and the human body.

There is increasing evidence that exposure to PFAS can adversely affect human health. As a result, regulatory bodies are legislating that many materials should be tested to ensure that they do not contain traces of PFAS or that the traces are below permitted legal limits.

Because PFAS are widely used in materials such as PTFE, which are commonly used in chemical analysis consumables, laboratories need new labware products to minimize background contamination from these chemicals.

9mm Screw Thread Ribbed Caps, lined with 1mm thick Polyimide/Silicone

When you are unable to use PTFE as a Septa, these are the perfect alternative. The usable temperature range of this new cap is up to 130°C, and is suitable for up to 10 injections.

Polyimide is amber-coloured translucent and the white silicone rubber is a high-purity rubber composition, which reduces leaching.

Polypropylene Wide Neck Screw Top Vials are the only vials you should use for your PFAS analyses

Q-Range™ polypropylene vials are manufactured from highest quality chemical resistant polypropylene, it is ideal for “PFAS-free” sampling, testing, storage and transportation operations. These lightweight vials are an excellent economical alternative to glass and are designed to work with most autosamplers. The design and unique manufacturing process for these polypropylene vials ensures less adsorption of the sample, resulting in far higher recoveries (97% compared to some competitors vials of only 39%). Q-Range PFAS vials are relied upon by laboratories around the world when testing for these substances.

Vial Kits for PFAS Testing

These vial kits for PFAS testing include 100 Wide Neck, Screw Top Polypropylene Vials and 100 new PFAS Caps/Septa, packaged in sealed clear plastic bags which fit in a bench drawer for easy access and to keep the products clean and dust free.



Cat. No.	Description	Dimensions (mm)	Unit
60-101498	Vial Kit - P/Nos. 60-100007 and 60-101035-B 100-300µL Polypropylene Vial, Screw Top, Short Thread + 9mm Blue Open Top Cap with 1mm thick Polyimide/Silicone Septa for PFAS Testing	12 x 32	100
60-101499	Vial Kit - P/N 60-100053 and 60-101035-B 500µL Polypropylene Vial, Screw Top, Short Thread + 9mm Blue Open Top Cap with 1mm thick Polyimide/Silicone Septa for PFAS Testing	12 x 32	100
60-101500	Vial Kit - P/N 60-100068 and 60-101035-B 700µL Polypropylene Vial, Screw Top, Short Thread + 9mm Blue Open Top Cap with 1mm thick Polyimide/Silicone Septa for PFAS Testing	12 x 32	100
60-101501	Vial Kit - P/N 60-100087 and 60-101035-B 1.5mL Polypropylene Vial, Screw Top, Short Thread + 9mm Blue Open Top Cap with 1mm thick Polyimide/Silicone Septa for PFAS Testing	12 x 32	100

Caps and vials are available separately - see pages 11 - 13

Wide Mouth Screw Top Vials, 10-425mm Thread

With a 40% larger opening than standard vials, these 10-425mm neck finish vials provide the largest target area of any vial.

Available in clear or amber Type 1 borosilicate glass.

The design of the vial precisely centres a limited volume insert in the vial neck.

Wide opening permits easier filling

Compatible with Jasco, PerkinElmer, Shimadzu, Varian, Waters®



Cat. No.	Description	Dimensions (mm)	Units
60-100127	2.0mL Wide Mouth Vial, Clear Glass, Q-Clean	12 x 32	100
60-100127-A	2.0mL Wide Mouth Vial, Amber Glass, Q-Clean	12 x 32	100
60-100131	2.0mL Wide Mouth Vial, Clear Glass with Graduated Write-on Patch, Q-Clean	12 x 32	100
60-100131-A	2.0mL Wide Mouth Vial, Amber Glass with Graduated Write-on Patch, Q-Clean	12 x 32	100

Wide Mouth Micro Volume Screw Top Vials, 10mm

Wide Mouth Micro Volume Vials are all standard 12 x 32mm size but with shaped interiors which limit the vial volume.

These vials have a unique draining design which facilitates high sample recovery. Residual volumes as low as 15µL.

Available in clear or amber glass (for light sensitive applications)

Manufactured from Type 1 borosilicate glass.

Compatible with Jasco, PerkinElmer, Shimadzu, Varian, Waters®



Cat. No.	Description	Dimensions (mm)	Unit
60-113025	1.1mL Screw Top Wide Mouth Vial, Tapered Bottom with flat base, Clear Glass	12 x 32	100
60-113025-A	1.1mL Screw Top Wide Mouth Vial, Tapered Bottom with flat base, Amber Glass	12 x 32	100
60-113027	1.1mL Screw Top Microliter Vial, Clear Glass, Q-Clean	12 x 32	100
60-113027-A	1.1mL Screw Top Microliter Vial, Amber Glass, Q-Clean	12 x 32	100

Wide Mouth Fused Insert Screw Top Vials, 10mm

10mm Wide Neck Screw Thread Vials and a clear glass limited volume insert fused together.

This eliminates any movement of the insert within the vial, the potential of needle damage and the potential of contamination in the area between the vial and the insert around the neck of the vial.

Manufactured from Type 1 borosilicate glass.



Cat. No.	Description	Dimensions (mm)	Units
60-100033	300µL Fused Insert Vial, Clear Glass, with Write-on Patch	12 x 32	100
60-100033-A	300µL Fused Insert Vial, Amber Glass, with Write-on Patch	12 x 32	100

Limited Volume Inserts for Wide Mouth Screw Top Vials, 10mm

Inserts are available in Glass or Polypropylene. Some are supplied pre-assembled with a polymer bottom spring which acts as a shock absorber protecting the vial against breakage in case the needle should 'bottom out' in the vial.

Residual Volumes as low as 4µL



Cat. No.	Description	Dimensions (mm)	Unit
60-113050	250µL Tapered Glass Insert, Clear Glass	6 x 31	100
60-113050-Z	250µL Tapered Glass Insert, Clear Glass, Silanized	6 x 31	100
60-113051	300µL Tapered Glass Insert, Clear Glass	6 x 31	100
60-113051-Z	300µL Tapered Glass Insert, Clear Glass, Silanized	6 x 31	100
60-113052	400µL Glass Insert - Flat bottom, Clear Glass	6 x 31	100
60-113052-Z	400µL Glass Insert - Flat bottom, Clear Glass - Silanized	6 x 31	100
60-113053	250µL Tapered Glass Insert with plastic bottom spring, Clear Glass	5.7 x 29	100
60-113053-Z	250µL Tapered Glass Insert with plastic bottom spring, Clear Glass, Silanized	5.7 x 29	100
60-113056	250µL Tapered Polypropylene Insert with plastic spring, Clear	6 x 29	100

Wide Mouth Polypropylene Limited Volume Screw Top Vials, 10mm

Polypropylene vials are economical alternatives to glass. They are lightweight and have a good resistance to chemicals. An excellent choice for biological applications and for applications which involve samples with a high metal content such as AA, ICP-MS and ion chromatography

These Limited Volume vials enable maximum retrieval of the sample.



Cat. No.	Description	Dimensions (mm)	Unit
60-100132	500µL Wide Mouth Screw Top Polypropylene Limited Volume Vial	12 x 32	100
60-100132-CP	500µL Wide Mouth Screw Top Clear Polypropylene Limited Volume Vial	12 x 32	100
60-100132-A	500µL Wide Mouth Screw Top Amber Polypropylene Limited Volume Vial	12 x 32	100
60-100132-BK	500µL Wide Mouth Screw Top Black Polypropylene Limited Volume Vial	12 x 32	100
60-100132-TPX	500µL Wide Mouth Screw Top TPX Limited Volume Vial	12 x 32	100
60-100133	750µL Wide Mouth Screw Top Polypropylene Limited Volume Vial	12 x 32	100
60-100133-CP	750µL Wide Mouth Screw Top Clear Polypropylene Limited Volume Vial	12 x 32	100
60-100133-A	750µL Wide Mouth Screw Top Amber Polypropylene Limited Volume Vial	12 x 32	100
60-100133-BK	750µL Wide Mouth Screw Top Black Polypropylene Limited Volume Vial	12 x 32	100
60-100133-TPX	750µL Wide Mouth Screw Top TPX Limited Volume Vial	12 x 32	100

Screw Thread Caps with Pre-fitted Septa - 10mm

Pre-assembled open top polypropylene screw caps with ribbed outer sides are available with the most popular septa pre-fitted or **bonded** in.

Closed Top screw caps also available



Cat. No.	Description	Unit
60-101322	10-425mm Screw Cap, Open Top, Black PP with PTFE/Natural Rubber Septa, 1.3mm (Shore A 60)	100
60-101326	10-425mm Screw Cap, Open Top, Black PP with Red PTFE/White Silicone/Red PTFE Septa, 1mm (Shore A 45)	100
60-101335	10-425mm Screw Cap, Open Top, Black PP with Red PTFE/White Silicone Septa, 1.3mm (Shore A 45)	100
60-101336	10-425mm Screw Cap, Open Top, Black PP with Blue PTFE/White Silicone Septa, Pre-Slit, 1.5mm (Shore A 55)	100
60-101370	10-425mm Screw Cap, Open Top, Black PP with Bonded Red PTFE/White Silicone Septa, 1.3mm (Shore A 45)	100
60-101371	10-425mm Screw Cap, Open Top, Black PP with Bonded Red PTFE/White Silicone Septa, 1.3mm, Pre-Slit (Shore A 45)	100
60-101337	10-425mm Screw Cap, Closed Top , Black PP with Clear PTFE/Natural Rubber Septa, 1mm (Shore A 60)	100

Screw Thread Caps, 10mm

Polypropylene open top screw caps for 10-425mm thread vials. Use with the range of septa available separately.



Cat. No.	Description	Unit
60-100854	10-425mm Open Top Cap, Black Polypropylene, Unlined *	10 x 100
60-100884	10-425mm Solid Top Cap, Black Polypropylene, Unlined	10 x 100

* Caps are available in (-B) Blue, (-G) Green, (-R) Red, (-W) White and (-Y) Yellow - please state alternative colour required

Septa for Screw Thread Caps, 10mm

Septa for 10-425mm Screw Caps are available in a range of materials to suit your particular application



Cat. No.	Description	Unit
60-101202	White PTFE Septa, 10mm x 0.20mm (Shore A 53)	10 x 100
60-101213	PTFE/Natural Rubber Septa, 10mm x 1mm (Shore A 60)	10 x 100
60-110750	Red PTFE/White Silicone Septa, 10mm x 1.3mm (Shore A 45)	10 x 100
60-101220	Red PTFE/White Silicone/Red PTFE Septa, 10mm x 1mm (Shore A 45)	10 x 100
60-110751	Blue PTFE/White Silicone Septa, Pre-Slit, 10mm x 1.5mm (Shore A 55)	10 x 100

Wide Mouth Crimp Top Vials, 11mm Crimp

Wide Mouth Vials have a 40% larger opening than standard vials making them the first choice for reliability and preventing damaged needles due to their much larger available injection area.



Precision neck improves crimping quality.

Manufactured from Type 1 borosilicate glass, the 12 x 32mm vials are suitable for a wide range of instruments including Agilent®, Thermo Scientific® and Waters®.



Cat. No.	Description	Dimensions (mm)	Unit
60-100139	2mL Crimp Top Wide Mouth Vial, Clear Glass, Q-Clean	12 x 32	100
60-100139-A	2mL Crimp Top Wide Mouth Vial, Amber Glass, Q-Clean	12 x 32	100
60-100139-Z	2mL Crimp Top Wide Mouth Vial, Clear Glass, Silanized, Q-Clean	12 x 32	100
60-100143	2mL Crimp Top Wide Mouth Vial, Clear Glass with Graduated Write-on Patch, Q-Clean	12 x 32	100
60-100143-Z	2mL Crimp Top Wide Mouth Vial, Clear Glass with Graduated Write-on Patch, Silanized, Q-Clean	12 x 32	100
60-100143-A	2mL Crimp Top Wide Mouth Vial, Amber Glass with Graduated Write-on Patch, Q-Clean	12 x 32	100
60-100143-A-Z	2mL Crimp Top Wide Mouth Vial, Amber Glass with Graduated Write-on Patch, Silanized, Q-Clean	12 x 32	100
60-100140	2.5mL Crimp Top Wide Mouth Vial, Clear Glass, 11mm Crimp Finish, Q-Clean	12 x 41	100

Wide Mouth Micro Volume Crimp Top Vials, 11mm Crimp

Wide Mouth Micro Volume Vials are all standard 12 x 32mm size but with shaped interiors which limit the vial volume. These vials have a unique draining design which facilitates high sample recovery.



Residual volumes as low as 4µL. Available in clear or amber glass (for light sensitive applications)

Manufactured from Type 1 borosilicate glass.



Cat. No.	Description	Dimensions (mm)	Unit
60-113002	0.9mL Crimp Top Wide Mouth Vial with Tapered Bottom, Clear Glass	12 x 32	100
60-113003	1.1mL Crimp Top Wide Mouth Vial with Tapered Bottom, Clear Glass	12 x 32	100
60-113004	1.1mL Crimp Top Wide Mouth Vial, Tapered Bottom with Flat Base, Clear Glass	12 x 32	100
60-113004-A	1.1mL Crimp Top Wide Mouth Vial, Tapered Bottom with Flat Base, Amber Glass	12 x 32	100
60-113000	1.1mL Crimp Top Wide Mouth Microliter Vial, Clear Glass	12 x 32	100
60-113000-Z	1.1mL Crimp Top Wide Mouth Microliter Vial, Clear Glass, Silanized	12 x 32	100
60-113000-A	1.1mL Crimp Top Wide Mouth Microliter Vial, Amber Glass	12 x 32	100
60-113005	1.1mL Crimp Top Wide Mouth Microliter Vial, Clear Glass, Q-Clean	12 x 32	100
60-113005-Z	1.1mL Crimp Top Wide Mouth Microliter Vial, Clear Glass, Silanized	12 x 32	100
60-113005-A	1.1mL Crimp Top Wide Mouth Microliter Vial, Amber Glass	12 x 32	100

Wide Mouth Fused Insert Crimp Top Vials, 11mm Crimp

Wide Mouth Fused Insert Vials consist of a standard Wide Mouth Vial and a clear glass limited volume insert fused together.

This eliminates any movement of the insert within the vial, needle damage and the potential of contamination in the area between the vial and the insert around the neck of the vial.

Manufactured from Type 1 borosilicate glass.



Cat. No.	Description	Dimensions (mm)	Unit
60-113006	200µL Crimp Top Wide Mouth Fused Insert Vial, Base Bonded, Clear Glass	12 x 32	100
60-113006-A	200µL Crimp Top Wide Mouth Fused Insert Vial, Base Bonded, Amber Glass	12 x 32	100
60-100043	200µL Crimp Top Fused Insert Vial, Top Bonded, Clear Glass with Write-on-Patch	12 x 32	100
60-100043-A	200µL Crimp Top Fused Insert Vial, Top Bonded, Amber Glass with Write-on-Patch	12 x 32	100
60-100039	300µL Crimp Top Fused Insert Vial, Base Bonded, Clear Glass	12 x 32	100
60-100039-Z	300µL Crimp Top Fused Insert Vial, Base Bonded, Clear Glass, Silanized	12 x 32	100
60-100039-A	300µL Crimp Top Fused Insert Vial, Base Bonded, Amber Glass	12 x 32	100
60-100042	300µL Crimp Top Fused Insert Vial, Base Bonded, Clear Glass with Write-on Patch	12 x 32	100
60-100042-A	300µL Crimp Top Fused Insert Vial, Base Bonded, Amber Glass with Write-on Patch	12 x 32	100

Limited Volume Inserts for Wide Mouth Crimp Top Vials, 11mm

Inserts are available in Glass or Polypropylene. Some are supplied pre-assembled with a polymer bottom spring which acts as a shock absorber protecting the vial against breakage in case the needle should 'bottom out' in the vial.

Residual Volumes as low as 4µL



Cat. No.	Description	Dimensions (mm)	Unit
60-113050	250µL Tapered Glass Insert, Clear Glass	6 x 31	100
60-113050-Z	250µL Tapered Glass Insert, Clear Glass, Silanized	6 x 31	100
60-113051	300µL Tapered Glass Insert, Clear Glass	6 x 31	100
60-113052	400µL Glass Insert - Flat bottom, Clear Glass	6 x 31	100
60-113052-Z	400µL Glass Insert - Flat bottom, Clear Glass - Silanized	6 x 31	100
60-113053	250µL Tapered Glass Insert with plastic bottom spring, Clear Glass	5.7 x 29	100
60-113053-Z	250µL Tapered Glass Insert with plastic bottom spring, Clear Glass, Silanized	5.7 x 29	100
60-113056	250µL Tapered Polypropylene Insert with plastic spring, Clear	6 x 29	100

Aluminium Crimp Caps with Pre-fitted Septa, 11mm

These high specification Aluminium Crimp Caps are for use with vials having an 11mm wide neck crimp top finish.

They are available with a variety of Septa materials to suit a wide range of samples and in various colours to aid sample identification.



Cat. No.	Description	Unit
60-100650	11mm Aluminium Crimp Cap (Silver) with PTFE Septa, 0.25mm (Shore A 53)	100
60-100649	11mm Aluminium Crimp Cap (Silver) with PTFE/Natural Rubber Septa, 1mm (Shore A 60) *	100
60-100647	11mm Aluminium Crimp Cap (Silver) with PTFE/Red Rubber Septa, 1mm (Shore A 45) *	100
60-100648	11mm Aluminium Crimp Cap (Silver) with PTFE/Butyl/Natural Rubber Septa, 1mm (Shore A 45) *	100
60-100676	11mm Aluminium Crimp Cap (Silver) with Red PTFE/White Silicone Septa, 1.3mm (Shore A 45) *	100
60-100712	11mm Aluminium Crimp Cap (Silver) with Clear PTFE/Cream Silicone Q-SEP™ Septa, 1mm (Shore A 38)	100
60-100714	11mm Aluminium Crimp Cap (Silver) with Red PTFE/Cream Silicone Septa, 1.5mm (Shore A 55)	100
60-100713	11mm Aluminium Crimp Cap (Silver) with Blue PTFE/White Silicone Septa, Cross-Slit, 1mm (Shore A 55)	100
60-100705	11mm Aluminium Crimp Cap (Silver) with Red PTFE/White Silicone/Red PTFE Septa, 1mm (Shore A 45)	100
60-100659	11mm Aluminium Crimp Cap (Silver) with Grey PTFE/Cream Butyl Rubber Septa, 1.3mm (Shore A 55)	100
60-100660	11mm Aluminium Crimp Cap (Silver) with Grey PTFE/Cream Butyl/Grey PTFE Septa, 1mm (Shore A 55)	100

* Caps are also available in (-B) Blue, (-G) Green, (-R) Red and (-Y) Gold - please state alternative colour required

Crimp Caps with Pre-fitted High Temperature Septa, 11mm

Crimp caps with septa specifically for higher temperature use.

Viton is resistant to a large number of corrosive organic substances and has a high thermal and chemical resistance.

Most commonly used in the petrochemical industry



Cat. No.	Description	Unit
60-100719	11mm Aluminium Crimp Cap (Silver) with PTFE Septa, with roll groove, 0.25mm (Shore A 53)	100
60-100718	11mm Aluminium Crimp Cap (Silver) with PTFE Septa and TPF O-ring, 0.25mm (Shore A 53)	100
60-100717	11mm Aluminium Crimp Cap (Silver) with Aluminium Foil/White Silicone Septa, 1.3mm (Shore A 50)	100
60-100716	11mm Aluminium Crimp Cap (Silver) with Viton 1A Septa, 1mm (Shore A 70)	100
60-100715	11mm Aluminium Crimp Cap (Silver) with Viton 1A Septa, 1.5mm (Shore A 75)	100

Trace analysis and TPF closure systems, 11mm

Total Phthalate Free (TPF) Seals with assembled aluminium liner (60-100900)

Septa material free of any elastomers and halogens; therefore no contamination of the sample by plasticizers, Silicone or Butyl rubbers and PTFE/FEP/TEF materials

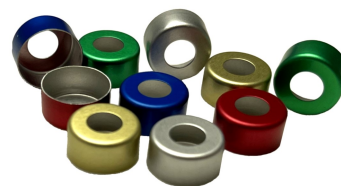
- Recommended for GC/MS and LC/MS applications
- The additional ring which is assembled above the aluminium liner achieves an excellent tightness and inertness of the complete combination seal
- Suitable for storing of standards or reactive substances which would normally corrode the septum material



Cat. No.	Description	Unit
60-100900	11mm Aluminium Crimp Cap (Silver) with Aluminium Septa and TPF O-ring, 0.1mm	100
60-100901	11mm Aluminium Crimp Cap (Silver) with PTFE Septa and TPF O-ring, 0.25mm (Shore A 53)	100

Aluminium Crimp Caps, 11mm

11mm Aluminium Crimp Caps are available in a range of colours for use with the various septa listed below.



Cat. No.	Description	Unit
60-100697	11mm Aluminium Crimp Cap, Silver, no liner	100
60-100697-B	11mm Aluminium Crimp Cap, Blue, no liner	100
60-100697-G	11mm Aluminium Crimp Cap, Green, no liner	100
60-100697-R	11mm Aluminium Crimp Cap, Red, no liner	100
60-100697-Y	11mm Aluminium Crimp Cap, Gold, no liner	100

Septa for Aluminium Crimp Caps, 11mm

Septa for 11mm Crimp Caps are available in a range of materials to suit your particular application



Cat. No.	Description	Unit
60-100790	PTFE Virginal Septa, 0.2mm (Shore A 53)	100
60-100791	PTFE/Natural Rubber Septa, 1mm (Shore A 60)	100
60-100792	Beige PTFE/Red Rubber Septa, 1mm (Shore A 45)	100
60-100776	Red PTFE/White Silicone Septa, 1.3mm (Shore A 45)	100
60-100777	Red PTFE/Cream Silicone Septa, 1.5mm (Shore A 55)	100
60-100778	Red PTFE/White Silicone/Red PTFE Septa, 1mm (Shore A 45)	100
60-100779	Blue PTFE/White Silicone Septa, Pre-Slit, 1.5mm (Shore A 55)	100
60-100781	White Silicone/Aluminium Foil Septa, 1.3mm (Shore A 50)	100
60-100793	Grey PTFE/Cream Butyl Septa, 1.3mm (Shore A 55)	100
60-100794	Grey PTFE/Cream Butyl/Grey PTFE Septa, 1.3mm (Shore A 55)	100
60-100780	Viton, Black Septa, 1mm (Shore A 70)	100

Magnetic Crimp Caps with Pre-fitted Septa, 11mm

Magnetic Crimp Caps are for use with instruments e.g. CTC Analytics PAL, which transport the vials using magnets.



Cat. No.	Description	Unit
60-100656	11mm Magnetic Crimp Cap (Silver) with Clear PTFE/Red Rubber Septa, 1mm (Shore A 45)	100
60-100709	11mm Magnetic Crimp Cap, Silver with Red PTFE/White Silicone Septa, 1.3mm (Shore A 45)	100
60-100681	11mm Magnetic Crimp Cap (Silver) with Clear PTFE/Red Silicone Septa, 1.3mm (Shore A 55)	100
60-100710	11mm Magnetic Crimp Cap (Silver) with Red PTFE/White Silicone/Red PTFE Septa, 1mm (Shore A 45)	100

Aluminium Crimp Caps with Pre-fitted Ultra Low Bleed Septa for LC/MS, 11mm

These Aluminium Crimp Caps are supplied with an Ultra Low Bleed LC/MS Septa. These are ideal for highly sensitive applications e.g. Mass-Spec or where multiple injections are required.

These special seals eliminate particulates with no interfering peaks.



Cat. No.	Description	Unit
60-100682	11mm Aluminium Crimp Cap (Silver) with Clear PTFE/Blue Silicone ULB Septa, 1mm	100
60-100682-B	11mm Aluminium Crimp Cap (Blue) with Clear PTFE/Blue Silicone ULB Septa, 1mm	100
60-100682-G	11mm Aluminium Crimp Cap (Green) with Clear PTFE/Blue Silicone ULB Septa, 1mm	100
60-100682-R	11mm Aluminium Crimp Cap (Red) with Clear PTFE/Blue Silicone ULB Septa, 1mm	100
60-100682-Y	11mm Aluminium Crimp Cap (Gold) with Clear PTFE/Blue Silicone ULB Septa, 1mm	100

Wide Mouth Crimp Top Vial Kits, 11mm Crimp

Vial Kits consist of selected vials and pre-assembled caps and Septa which are packaged in an easily accessible tray.

The kits are ideal for storing in a bench drawer and keep the components visible and particle free



Cat. No.	Description	Unit
60-101519	Vial Kit - P/Nos: 60-100143 + 60-100647 2mL Wide Neck Vial, Crimp Top, Clear Glass with Write-on Graduation Patch + 11mm Aluminium Crimp Cap (Silver) with Clear PTFE/Red Rubber Septa, Q-Clean	100
60-101519-A	Vial Kit - P/Nos: 60-100143-A + 60-100647 2mL Wide Neck Vial, Crimp Top, Amber Glass with Write-on Graduation Patch + 11mm Aluminium Crimp Cap (Silver) with Clear PTFE/Red Rubber Septa, Q-Clean	100
60-101520	Vial Kit - P/Nos. 60-100143 + 60-100649 2mL Wide Neck Vial, Crimp Top, Clear Glass with Write-on Graduation Patch + 11mm Aluminium Crimp Cap (Silver) with Clear PTFE/Natural Rubber Septa, Q-Clean	100
60-101520-A	Vial Kit - P/Nos. 60-100143-A + 60-100649 2mL Wide Neck Vial, Crimp Top, Amber Glass with Write-on Graduation Patch + 11mm Aluminium Crimp Cap (Silver) with Clear PTFE/Natural Rubber Septa, Q-Clean	100
60-101522	Vial Kit - P/Nos: 60-100143 + 60-100676 2mL Wide Neck Vial, Crimp Top, Clear Glass with Write-on Graduation Patch + 11mm Aluminium Crimp Cap (Silver) with Red PTFE/White Silicone Septa, Q-Clean	100
60-101522-A	Vial Kit - P/Nos: 60-100143-A + 60-100676 2mL Wide Neck Vial, Crimp Top, Amber Glass with Write-on Graduation Patch + 11mm Aluminium Crimp Cap (Silver) with Red PTFE/White Silicone Septa, Q-Clean	100
60-101524	Vial Kit - P/Nos: 60-100143 + 60-100705 2mL Wide Neck Vial, Crimp Top, Clear Glass with Write-on Graduation Patch + 11mm Aluminium Crimp Cap (Silver) with Red PTFE/White Silicone/Red PTFE Septa, Q-Clean	100
60-101524-A	Vial Kit - P/Nos: 60-100143-A + 60-100705 2mL Wide Neck Vial, Crimp Top, Amber Glass with Write-on Graduation Patch + 11mm Aluminium Crimp Cap (Silver) with Red PTFE/White Silicone/Red PTFE Septa, Q-Clean	100

Wide Mouth Crimp / Snap Top Vials, 11mm Crimp

With a 40% wider opening than standard vials, the Crimp/Snap Top finish of these vials enables a choice of closure - **either 11mm Crimp Caps or 11mm Snap Caps.**

Snap Caps eliminate the requirement to crimp or de-cap vials, saving time and effort. Snap Caps cannot be pressurised

Manufactured from Type 1 borosilicate glass, these vials are suitable for Agilent CTC, DANI, Dionex, Jasco, Merck/Hitachi, Shimadzu, Spark, Thermo, Varian, and Waters autosampler models using 12 x 32mm vials.



Cat. No.	Description	Dimensions (mm)	Unit
60-100147	2mL Crimp/Snap Top Wide Mouth Vial, Clear Glass, Q-Clean	12 x 32	100
60-100149	2mL Crimp/Snap Top Wide Mouth Vial, Clear Glass with Grad. Write-on Patch, Q-Clean	12 x 32	100
60-100149-A	2mL Crimp/Snap Top Wide Mouth Vial, Amber Glass with Grad. Write-on Patch, Q-Clean	12 x 32	100

Limited Volume Inserts for Wide Mouth Crimp / Snap Top Vials, 11mm

Inserts are available in Glass or Polypropylene. Some are supplied pre-assembled with a polymer bottom spring which acts as a shock absorber protecting the vial against breakage in case the needle should 'bottom out' in the vial.

Residual Volumes as low as 4µL



Cat. No.	Description	Dimensions (mm)	Unit
60-113050	250µL Tapered Glass Insert, Clear Glass	6 x 31	100
60-113050-Z	250µL Tapered Glass Insert, Clear Glass, Silanized	6 x 31	100
60-113051	300µL Tapered Glass Insert, Clear Glass	6 x 31	100
60-113051-Z	300µL Tapered Glass Insert, Clear Glass, Silanized	6 x 31	100
60-113052	400µL Glass Insert - Flat bottom, Clear Glass	6 x 31	100
60-113052-Z	400µL Glass Insert - Flat bottom, Clear Glass - Silanized	6 x 31	100
60-113053	250µL Tapered Glass Insert with plastic bottom spring, Clear Glass	5.7 x 29	100
60-113053-Z	250µL Tapered Glass Insert with plastic bottom spring, Clear Glass, Silanized	5.7 x 29	100
60-113056	250µL Tapered Polypropylene Insert with plastic spring, Clear	6 x 29	100

Wide Mouth Crimp / Snap Top Fused Insert Vials, 11mm Crimp

With a 40% wider opening than standard vials, these Crimp / Snap Top Fused Insert Vials consist of a Wide Mouth Crimp / Snap Top Vial and a clear glass limited volume insert fused together.

This eliminates any movement of the insert within the vial and any needle damage. The Crimp / Snap Top finish enables a choice of closure - either 11mm Crimp Caps or Snap Caps.

Snap Caps cannot be pressurised. Manufactured from Type 1 borosilicate glass.



Cat. No.	Description	Dimensions (mm)	Unit
60-100045	250µL Crimp/Snap Top Fused Insert Vial, Base Bonded, Clear Glass, Q-Clean	12 x 32	100
60-100045-A	250µL Crimp/Snap Top Fused Insert Vial, Base Bonded, Amber Glass, Q-Clean	12 x 32	100
60-100044	300µL Crimp/Snap Top Fused Insert Vial, base Bonded, Clear Glass, Q-Clean	12 x 32	100
60-100044-A	300µL Crimp/Snap Top Fused Insert Vial, Base Bonded, Amber Glass, Q-Clean	12 x 32	100

Wide Mouth Crimp / Snap Top Micro Volume Vials, 11mm Crimp

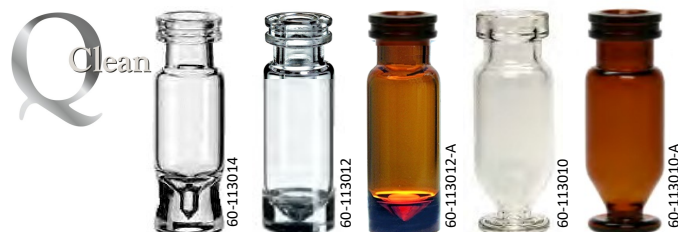
Wide Mouth Micro Volume Vials are all standard 12 x 32mm size but with shaped interiors which limit the vial volume.

These vials have a unique draining design which facilitates high sample recovery.

Residual volume as low as 1µL

Available in clear or amber glass (for light sensitive applications)

Manufactured from Type 1 borosilicate glass.



Cat. No.	Description	Dimensions (mm)	Unit
60-113014	0.9mL Crimp/Snap Top Wide Mouth High Recovery Vial, Clear Glass	12 x 32	100
60-113012	1.1mL Crimp/Snap Top Wide Mouth Vial, Clear Glass, Q-Clean	12 x 32	100
60-113012-A	1.1mL Crimp/Snap Top Wide Mouth Vial, Amber Glass, Q-Clean	12 x 32	100
60-113010	1.1mL Crimp/Snap Top Wide Mouth Vial, Tapered Bottom with flat base, Clear Glass	12 x 32	100
60-113010-A	1.1mL Crimp/Snap Top Wide Mouth Vial, Tapered Bottom with flat base, Amber Glass	12 x 32	100

Wide Mouth Crimp / Snap Top Polypropylene & TPX Vials, 11mm Crimp

Polypropylene vials are economical alternatives to glass. They are lightweight and have a good resistance to chemicals. An excellent choice for biological applications and for applications which involve samples with a high metal content such as AA, ICP-MS and ion chromatography.

Amber vials add protection for light sensitive samples. Black vials protect light sensitive samples from having a chemical reaction during sampling, testing or transport. These Limited Volume vials enable maximum retrieval of the sample.



Cat. No.	Description	Dimensions (mm)	Unit
60-100014	300µL Crimp/Snap Top Limited Volume Vial - Polypropylene *	12 x 32	100
60-100014-A	300µL Crimp/Snap Top Limited Volume Vial - Amber Polypropylene *	12 x 32	100
60-100014-BK	300µL Crimp/Snap Top Limited Volume Vial - Black Polypropylene *	12 x 32	100
60-100014-CP	300µL Crimp/Snap Top Limited Volume Vial - Clear Polypropylene *	12 x 32	100
60-100014-TPX	300µL Crimp/Snap Top Limited Volume Vial - TPX (Polymethyl pentene)	12 x 32	100
60-100016	500µL Crimp/Snap Top Limited Volume Vial - Polypropylene *	12 x 32	100
60-100016-A	500µL Crimp/Snap Top Limited Volume Vial - Amber Polypropylene *	12 x 32	100
60-100016-CP	500µL Crimp/Snap Top Limited Volume Vial - Clear Polypropylene *	12 x 32	100
60-100016-TPX	500µL Crimp/Snap Top Limited Volume Vial - TPX (Polymethyl pentene)	12 x 32	100
60-100075	750µL Crimp/Snap Top Limited Volume Vial - Polypropylene *	12 x 32	100
60-100075-A	750µL Crimp/Snap Top Limited Volume Vial - Amber Polypropylene *	12 x 32	100
60-100075-BK	750µL Crimp/Snap Top Limited Volume Vial - Black Polypropylene *	12 x 32	100
60-100075-CP	750µL Crimp/Snap Top Limited Volume Vial - Clear Polypropylene *	12 x 32	100
60-100075-TPX	750µL Crimp/Snap Top Limited Volume Vial - TPX (Polymethyl pentene)	12 x 32	100
60-100076	1.5mL Crimp/Snap Top Vial - Polypropylene *	12 x 32	100
60-100076-A	1.5mL Crimp/Snap Top Vial - Amber Polypropylene *	12 x 32	100
60-100076-BK	1.5mL Crimp/Snap Top Vial - Black Polypropylene *	12 x 32	100

* These Polypropylene vials are all suitable for PFAS analysis

Snap Caps with Pre-fitted Septa, 11mm

Snap Caps are simply snapped on and off the vial by hand, thus eliminating the requirement of crimping and de-capping and the hazards associated with sharp metal edges.

The larger opening top ensures the needle's target is significantly increased. Snap Caps cannot be pressurised



Cat. No.	Description	Unit
60-100775	11mm Snap Cap (Clear), Polyethylene with thinned penetration area	100
60-100775-B	11mm Snap Cap (Blue), Polyethylene with thinned penetration area	100
60-100726	11mm Snap Cap (Clear), Polyethylene with thinned penetration area, Pre-Slit	100
60-100727	11mm Snap Cap (Clear), Polyethylene with Starburst Centre	100
60-100727-B	11mm Snap Cap (Blue), Polyethylene with Starburst Centre	100
60-100729	11mm Snap Cap (Clear), Polyethylene with Clear PTFE/Natural Rubber Septa, 1mm (Shore A 60)	100
60-100729-B	11mm Snap Cap (Blue), Polyethylene with Clear PTFE/Natural Rubber Septa, 1mm (Shore A 60)	100
60-100744	11mm Snap Cap (Clear), Polyethylene with Beige PTFE/Red Rubber Septa, 1mm (Shore A 45)	100
60-100744-B	11mm Snap Cap (Blue), Polyethylene with Beige PTFE/Red Rubber Septa, 1mm (Shore A 45)	100
60-100745	11mm Snap Cap (Clear), Polyethylene with Clear PTFE/Red Rubber Septa, 1mm (Shore A 45)	100
60-100755	11mm Snap Cap (Clear), Polyethylene with Red PTFE/White Silicone Septa, 1.3mm (Shore A 45)	100
60-100755-B	11mm Snap Cap (Blue), Polyethylene with Red PTFE/White Silicone Septa, 1.3mm (Shore A 45)	100
60-100765	11mm Snap Cap (Clear), Polyethylene with Red PTFE/White Silicone/Red PTFE Septa, 1mm (Shore A 45)	100
60-100765-B	11mm Snap Cap (Blue), Polyethylene with Red PTFE/White Silicone/Red PTFE Septa, 1mm (Shore A 45)	100
60-100774	11mm Snap Cap (Clear), Polyethylene with Blue PTFE/White Silicone Septa, Cross-Slit, 1mm (Shore A 55)	100
60-100774-B	11mm Snap Cap (Blue), Polyethylene with Blue PTFE/White Silicone Septa, Cross-Slit, 1mm (Shore A 55)	100
60-100725	11mm Snap Cap, Clear Polyethylene with PTFE/Butyl Septa (Shore A55)	100
60-100772-B	11mm Snap Cap (Blue), Polyethylene with Polyimide/Silicone Liner for PFAS Testing, 1mm	100

Snap Caps and Septa, 11mm

Clear and Blue Snap Caps with a range of Septa to suit your particular application



Cat. No.	Description	Unit
Snap Caps		
60-100770	11mm Snap Cap, Open Hole, Transparent	100
60-100770-B	11mm Snap Cap, Open Hole, Blue	100
Septa		
60-100766	Clear PTFE/Natural Rubber Septa 10.5mm x 1mm, for 11mm Snap Caps, 1mm (Shore A 60)	100
60-100767	Red PTFE/White Silicone Septa 10.5mm x 1.3mm, for 11mm Snap Caps, 1.3mm (Shore A 45)	100
60-100768	Red PTFE/White Silicone/Red PTFE Septa 10.5mm x 1mm, for 11mm Snap Caps, 1mm (Shore A 45)	100
60-100769	Blue PTFE/White Silicone Septa 10.5mm x 1mm, Cross-Slit, for 11mm Snap Caps, 1mm (Shore A 55)	100

Aluminium Crimp Caps with Pre-fitted Septa, 11mm

These Aluminium Crimp Caps are for use with vials having an 11mm crimp top finish. They are available with a variety of septa materials to suit a wide range of samples and in various colours to aid sample identification.



Cat. No.	Description	Unit
60-100650	11mm Aluminium Crimp Cap (Silver) with PTFE Septa, 0.25mm (Shore A 53) *	100
60-100649	11mm Aluminium Crimp Cap (Silver) with PTFE/Natural Rubber Septa, 1mm (Shore A 60) *	100
60-100647	11mm Aluminium Crimp Cap (Silver) with PTFE/Red Rubber Septa, 1mm (Shore A 45) *	100
60-100648	11mm Aluminium Crimp Cap (Silver) with PTFE/Butyl/Natural Rubber Septa, 1mm (Shore A 45) *	100
60-100676	11mm Aluminium Crimp Cap (Silver) with Red PTFE/White Silicone Septa, 1.3mm (Shore A 45) *	100
60-100712	11mm Aluminium Crimp Cap (Silver) with Clear PTFE/Cream Silicone Q-SEP™ Septa, 1mm (Shore A 38)	100
60-100714	11mm Aluminium Crimp Cap (Silver) with Red PTFE/Cream Silicone Septa, 1.5mm (Shore A 55)	100
60-100713	11mm Aluminium Crimp Cap (Silver) with Blue PTFE/White Silicone Septa, Cross-Slit, 1mm (Shore A 55)	100
60-100705	11mm Aluminium Crimp Cap (Silver) with Red PTFE/White Silicone/Red PTFE Septa, 1mm (Shore A 45)	100
60-100659	11mm Aluminium Crimp Cap (Silver) with Grey PTFE/Cream Butyl Rubber Septa, 1.3mm (Shore A 55)	100
60-100660	11mm Aluminium Crimp Cap (Silver) with Grey PTFE/Cream Butyl/Grey PTFE Septa, 1mm (Shore A 55)	100

* Caps are also available in (-B) Blue, (-G) Green, (-R) Red and (-Y) Gold - please state alternative colour required

Aluminium Crimp Caps with Pre-fitted Ultra Low Bleed Septa, 11mm

These Aluminium Crimp Caps are supplied with an Ultra Low Bleed LC/MS Septa. These are ideal for highly sensitive applications e.g. Mass Spec or where multiple injections are required.

These special seals eliminate particulates with no interfering peaks.



Cat. No.	Description	Unit
60-100682	11mm Crimp Cap (Silver) with Clear PTFE/Blue Silicone ULB Septa	100
60-100682-B	11mm Crimp Cap (Blue) with Clear PTFE/Blue Silicone ULB Septa	100
60-100682-G	11mm Crimp Cap (Green) with Clear PTFE/Blue Silicone ULB Septa	100
60-100682-R	11mm Crimp Cap (Red) with Clear PTFE/Blue Silicone ULB Septa	100
60-100682-Y	11mm Crimp Cap (Gold) with Clear PTFE/Blue Silicone ULB Septa	100

Magnetic Crimp Caps with Septa, 11mm

Magnetic Crimp Caps are for use with instruments which transport the vials using magnets., e.g. CTC Analytics PAL,



Cat. No.	Description	Unit
60-100656	11mm Magnetic Crimp Cap (Silver) with Clear PTFE/Red Rubber Septa, 1mm (Shore A 45)	100
60-100709	11mm Magnetic Crimp Cap, Silver with Red PTFE/White Silicone Septa, 1.3mm (Shore A 45)	100
60-100681	11mm Magnetic Crimp Cap (Silver) with Red PTFE/White Silicone Septa, 1.3mm , (Shore A 55)	100
60-100710	11mm Magnetic Crimp Cap (Silver) with Red PTFE/White Silicone/Red PTFE Septa, 1mm (Shore A 45)	100

Aluminium Crimp Caps, 11mm

11mm Aluminium Crimp Caps are available in a range of colours for use with the various septa listed below.



Cat. No.	Description	Unit
60-100697	11mm Aluminium Crimp Cap, Silver, no liner	100
60-100697-B	11mm Aluminium Crimp Cap, Blue, no liner	100
60-100697-G	11mm Aluminium Crimp Cap, Green, no liner	100
60-100697-R	11mm Aluminium Crimp Cap, Red, no liner	100
60-100697-Y	11mm Aluminium Crimp Cap, Gold, no liner	100

Septa for Aluminium Crimp Caps, 11mm

Septa for 11mm Crimp Caps are available in a range of materials to suit your particular application



Cat. No.	Description	Unit
60-100790	PTFE Virginal Septa, 0.2mm (Shore A 53)	100
60-100791	PTFE/Natural Rubber Septa, 1mm (Shore A 60)	100
60-100792	Beige PTFE/Red Rubber Septa, 1mm (Shore A 45)	100
60-100776	Red PTFE/White Silicone Septa, 1.3mm (Shore A 45)	100
60-100777	Red PTFE/Cream Silicone Septa, 1.5mm (Shore A 55)	100
60-100778	Red PTFE/White Silicone/Red PTFE Septa, 1mm (Shore A 45)	100
60-100779	Blue PTFE/White Silicone Septa, Cross-Slit, 1.5mm (Shore A 55)	100
60-100781	White Silicone/Aluminium Foil Septa, 1.3mm (Shore A 50)	100
60-100793	Grey PTFE/Cream Butyl Septa, 1.3mm (Shore A 55)	100
60-100794	Grey PTFE/Cream Butyl/Grey PTFE Septa, 1.3mm (Shore A 45)	100
60-100780	Viton, Black Septa, 1mm (Shore A 70)	100

Crimp / Snap Top Vials, 13mm Crimp

The Crimp Top / Snap Top finish provides a choice of closures, either Crimp Caps or Snap Caps.

Snap Caps eliminate the requirement to crimp or de-cap vials, saving time and effort.

Manufactured from Type 1 borosilicate glass, these vials are designed to use in Shimadzu and Waters WISP™ 48 position autosamplers.



Cat. No.	Description	Dimensions (mm)	Unit
60-100168	4.0mL Crimp / Snap Top Vial, Clear Glass	15 x 45	100
60-100168-A	4.0mL Crimp / Snap Top Vial, Amber Glass	15 x 45	100
60-100172	4.0mL Crimp / Snap Top Vial, Clear Glass with Graduated Write-on Patch	15 x 45	100
60-100172-A	4.0mL Crimp / Snap Top Vial, Amber Glass with Graduated Write-on Patch	15 x 45	100
60-100168-Z	4.0mL Crimp / Snap Top Vial, Clear Glass, Silanized	15 x 45	100
60-100168-A-Z	4.0mL Crimp / Snap Top Vial, Amber Glass, Silanized	15 x 45	100

Crimp and Snap Caps with Pre-fitted Septa, 13mm

Aluminium Crimp Caps are available with a variety of septa materials to suit a wide range of samples.

The larger opening top ensures the needle's target is significantly increased.

Snap Caps are simply snapped on and off the vial by hand, thus eliminating the requirement of crimping and de-capping and the hazards associated with sharp metal edges.



Cat. No.	Description	Unit
Crimp Caps		
60-100642	13mm Aluminium Crimp Cap (Silver) with PTFE Septa, 0.25mm (Shore A 53)	100
60-100657	13mm Aluminium Crimp Cap (Silver) with PTFE/Butyl Rubber Septa, 1mm (Shore A 55)	100
60-100687	13mm Aluminium Crimp Cap (Silver) with PTFE/Silicone Septa (Shore A 55)	100
60-100711	13mm Aluminium Crimp Cap (Silver) with PTFE/Silicone/PTFE Septa (Shore A 45)	100
Snap Caps		
60-100741	13mm Snap Cap (Clear) with PTFE Septa, 0.25mm (Shore A 53)	100
60-100753	13mm Snap Cap (Clear) with PTFE/Butyl Rubber Septa (Shore A 55)	100
60-100787	13mm Snap Cap (Clear) with PTFE/Silicone Septa, Pre-slit with Starburst (Shore A 55)	100
60-100782	13mm Snap Cap (Clear) with PTFE/Silicone/PTFE Septa, Pre-slit with Starburst (Shore A 45)	100

Screw Top Vials for Shimadzu and Waters WISP, 13-425mm Thread

4mL Vials with 13-425mm thread are designed to fit Agilent CTC, Dionex, Merck/Hitachi, PerkinElmer, Shimadzu, Varian/Brucker and Waters® autosamplers.

Available with or without graduated Write-on Patch.

Residual volumes as low as 4µL

Manufactured from clear or amber Type 1 Borosilicate glass.



Cat. No.	Description	Dimensions (mm)	Unit
60-113030	3.5mL Microliter Vial, Clear Glass, Q-Clean	15 x 45	100
60-100162	4.0mL Vial, Screw Top, Clear Glass, Q-Clean	15 x 45	100
60-100162-A	4.0mL Vial, Screw Top, Amber Glass, Q-Clean	15 x 45	100
60-100166	4.0mL Vial, Screw Top, Clear Glass with Graduated Write-on Patch, Q-Clean	15 x 45	100
60-100166-A	4.0mL Vial, Screw Top, Amber Glass with Graduated Write-on Patch, Q-Clean	15 x 45	100

Screw Top Caps with Pre-fitted Septa, 13mm

A range of pre-assembled open Top screw caps are available with the most popular septa varieties.



Cat. No.	Description	Unit
Open Top Caps		
60-101323	13-425mm Open Top Screw Cap, Black Polypropylene with PTFE/Red Rubber Septa, 1mm (Shore A60)	100
60-101328	13-425mm Open Top Screw Cap, Black Polypropylene with Red PTFE/White Silicone/Red PTFE Septa, 1mm (Shore A 45)	100
60-101348	13-425mm Open Top Screw Cap, Black Polypropylene with Blue PTFE/White Silicone Septa, 1.5mm, Pre-slit (Shore A 55)	100
60-101355	13-425mm Open Top Screw Cap, Black Polypropylene with Red PTFE/White Silicone Septa, 1.5mm (Shore A 45)	100
60-101356	13-425mm Open Top Screw Cap, Black Polypropylene with Grey PTFE/Red Butyl Septa, 1.3mm (Shore A 55)	100
60-101327	13-425mm Open Top Screw Cap, Black Polypropylene with Red PTFE/Cream Silicone Septa, 1.5mm (Shore A 55)	100

Solid Top Caps

60-110780	13-425mm Solid Top Screw Cap, Black Polypropylene with PTFE/Natural Rubber Septa, 1.3mm (Shore A 60)	100
60-110781	13-425mm Solid Top Screw Cap, Black Polypropylene with Grey PTFE/Cream Butyl Septa, 1.3mm (Shore A 55)	100
60-110782	13-425mm Solid Top Screw Cap, Black Polypropylene with Red PTFE/Cream Silicone Septa, 1.5mm (Shore A 55)	100
60-110783	13-425mm Solid Top Screw Cap, Black Polypropylene with PTFE/F217 Foam Liner	100
60-110783-W	13-425mm Solid Top Screw Cap, White Polypropylene with PTFE/F217 Foam Liner	100

Limited Volume Inserts for Screw Top Vials, 13mm

Limited Volume Insert for use with 4m Screw Top Vials.

Insert requires the bottom spring which acts as a shock absorber to prevent against breakage if the autosampler needle bottoms out.

Residual Volume < 9µL



Cat. No.	Description	Dimensions (mm)	Unit
60-113060	300µL Tapered Glass Insert, Clear Glass (Requires Spring 60-113061)	6 x 40	100
60-113061	Metal Spring for Tapered Glass Insert 60-113060		100

Screw Top Caps, 13mm

Available as Open Top or Solid Top design.

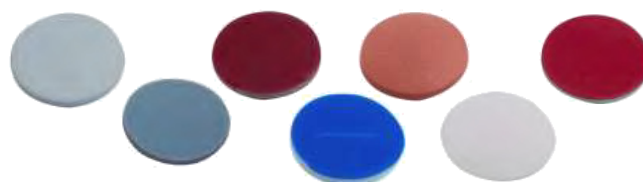


Cat. No.	Description	Unit
Open Top Screw Caps		
60-100861	13-425mm Open Top Screw Cap, Black Polypropylene, Unlined	100
60-100861-W	13-425mm Open Top Screw Cap, White Polypropylene, Unlined	100
Solid Top Screw Caps		
60-100885	13-425mm Solid Top Screw Cap, Black Polypropylene, Unlined	100
60-100885-W	13-425mm Solid Top Screw Cap, White Polypropylene, Unlined	100

Other cap colours are available on request

Septa for Screw Top Caps, 13mm

A wide range of septa materials are available to suit your application.



Cat. No.	Description	Unit
60-101203	White PTFE, 12mm x 0.20mm (Shore A 53)	100
60-101215	PTFE/Natural Rubber, 12mm x 1.3mm (Shore A 60)	100
60-101216	Grey PTFE/Cream Butyl Rubber, 12mm x 1.3mm (Shore A 55)	100
60-101221	Red PTFE/White Silicone/Red PTFE, 12mm x 1mm (Shore A 45)	100
60-101230	Red PTFE/White Silicone, 12mm x 1.3mm (Shore A 45)	100
60-101241	Blue PTFE/White Silicone, Pre-Slit, 12mm x 1mm (Shore A 55)	100

Vial Kits - Screw Top, 15-425mm Thread

Wide neck screw top storage vials.

Suitable for sample volumes from 800µL to 12mL

A wide range of caps and septa are available to suit all types of samples.



Cat. No.	Description	Dimensions (mm)	Unit
60-100204	8mL Environmental Storage Vial, Screw Top, Clear Glass, 15-425mm Thread, Q-Clean	16.6 x 61	100
60-100204-A	8mL Environmental Storage Vial, Screw Top, Amber Glass, 15-425mm Thread, Q-Clean	16.6 x 61	100
60-100206	12mL Environmental Storage Vial, Screw Top, Clear Glass, 15-425mm Thread, Q-Clean	18.5 x 66	100
60-100206-A	12mL Environmental Storage Vial, Screw Top, Amber Glass, 15-425mm Thread, Q-Clean	18.5 x 66	100

Screw Top Caps and Septa, 15mm



Cat. No.	Description	Unit
SCREW CAPS		
60-100866	15-425mm Screw Cap, Open Top, Black Polypropylene, Unlined	100
60-100887	15-425mm Solid Top Screw Cap, Black Polypropylene, Unlined	100
60-110770	15-425mm Solid Top Screw Cap, Black Polypropylene with PTFE/Natural Rubber Septa, 1.3mm, (Shore A 60)	100
60-110771	15-425mm Solid Top Screw Cap, Black Polypropylene with Grey PTFE/Red Butyl Septa, 1.5mm, (Shore A 55)	100
60-110772	15-425mm Solid Top Screw Cap, Black Polypropylene with Black Viton Septa, 1mm, (Shore A 70)	100
60-110773	15-425mm Solid Top Screw Cap, Black Polypropylene with Aluminium Foil/White Silicone Septa, 1.3mm, (Shore A 50)	100
60-110774	15-425mm Solid Top Screw Cap, Black Polypropylene with Grey Butyl Septa, 2mm, (Shore A 48)	100
SEPTA		
60-110752	White PTFE Septa, 14mm x 0.25mm, for 15-425mm Screw Caps, 0.25mm (Shore A 53)	100
60-110753	Black Viton Septa, 14mm x 1mm, for 15-425mm Screw Caps, 1mm (Shore A 70)	100
60-110754	Grey PTFE/Red Butyl Septa, 14mm x 1mm, for 15-425mm Screw Caps, 1.6mm (Shore A 55)	100
60-110755	White Silicone/Aluminium Foil Septa, 14mm x 1.3mm, for 15-425mm Screw Caps, 1.3mm (Shore A 50)	100
60-110756	Grey Butyl Septa, 14mm x 2mm, for 15-425mm Screw Caps. 2mm (Shore A 48)	100

Shell Vials and Plugs

Designed to work most autosamplers including in the Waters WISP™ 96 position autosampler.

- Available in superior quality clear or amber 1st hydrolytic class glass (Type 1) or Polypropylene for easy disposal
- Polyethylene Snap Plugs are available with a starburst centre design which eases syringe needle penetration
- Vials feature thicker walls for safer sample handling.

Recommended for use in a range of instruments including:

- Alcott
- Gilson
- Shimadzu
- Waters (WISP 96 position Carousel)

Other Shell Vials and inserts are available, please enquire



Cat. No.	Description	Dimensions (mm)	Unit
1mL Shell Vials without Snap Plug			
60-102560	1mL Shell Vial, Clear Glass (required 8mm Snap Plug)	8.2 x 40	100
60-102560-A	1mL Shell Vial, Amber Glass (required 8mm Snap Plug)	8.2 x 40	100
60-102562	1mL Shell Vial, Polypropylene (required 8mm Snap Plug)	8.2 x 40	100
8mm Snap Plug			
60-102564	8mm Clear Polyethylene Conical Snap Plug with Starburst		100
1mL Shell Vials with 6mm Snap Plug			
60-102550	1mL Shell Vial, Clear Glass with 6mm Snap Plug (without insertion barrier)	7.8 x 35	100
1mL Shell Vials with 8mm Snap Plug			
60-102551	1mL Shell Vial, Clear Glass with 8mm Snap Plug (without insertion barrier)	8.2 x 40	100
60-102551-A	1mL Shell Vial, Amber Glass with 8mm Snap Plug (without insertion barrier)	8.2 x 40	100
Micro Inserts for 1ml Shell Vial			
60-102552	0.1mL Micro-Insert, Clear Glass (for 60-102551 & 60-102551-A Shell Vials)	5 x 34	100
2mL Shell Vials with 12mm Snap Plug			
60-102553	2mL Shell Vial, Clear Glass with 12mm PE Snap Plug	11.6 x 31.5	100
60-102553-A	2mL Shell Vial, Amber Glass with 12mm PE Snap Plug	11.6 x 31.5	100
Micro Inserts for 2mL Shell Vials			
60-102554	250µL Micro-Insert, Tapered Clear Glass	6 x 31	100
60-102555	300µL Micro-Insert, Tapered Clear Glass	6 x 31	100
60-102556	350µL Micro-Insert, Clear Glass, flat Bottom	6 x 31	100
4mL Shell Vials with 15mm Snap Plug			
60-102557	4mL Shell Vial, Clear Glass with 15mm PE Snap Plug	14.65 x 44.6	100
60-102557-A	4mL Shell Vial, Amber Glass with 15mm PE Snap Plug	14.65 x 44.6	100
Micro Insert for 4ml Shell Vials			
60-102568	300µL Micro-Insert, Clear Glass, 13mm top	6 x 43.45	100

Headspace Vials, 18mm Screw Thread

Rounded Base

There are many headspace autosamplers on the market today, most of which use 10mL or 20mL vials of the type detailed below with either a flat or rounded base.

The design of these vials provides maximum possible strength to withstand the higher positive internal pressures found in headspace analysis.

For those instruments using a magnetic system to transport the vials to and from the oven, we also offer magnetic screw caps designed for that purpose.

Suitable for instruments by Atas, CTC PAL, Fisons, Gerstel, PerkinElmer, Shimadzu, Teledyne Tekmar, Thermo and Varian.



Cat. No.	Description	Dimensions (mm)	Unit
HEADSPACE VIALS 18mm SCREW TOP - ROUNDED BASE			
60-100284	10mL Headspace Vial, Screw Top, Clear Glass, Rounded Base, 18mm Screw Thread, Q-Clean	22.5 x 46	100
60-100284-A	10mL Headspace Vial, Screw Top, Amber Glass, Rounded Base, 18mm Screw Thread, Q-Clean	22.5 x 46	100
60-100286	20mL Headspace Vial, Screw Top, Clear Glass, Rounded Base, 18mm Screw Thread, Q-Clean	22.5 x 75.5	100
60-100286-A	20mL Headspace Vial, Screw Top, Amber Glass, Rounded Base, 18mm Screw Thread, Q-Clean	22.5 x 75.5	100
60-100287	20mL Headspace Vial, Screw Top, Clear Glass, Rounded Base with Graduated Write-on Patch, 18mm Screw thread, Q-Clean	22.5 x 75.5	100
60-100288	20mL Headspace Vial, Screw Top, Clear Glass, Rounded Base, 18mm Screw Thread, Q-Clean (For use with 18mm screw thread polypropylene caps, see page 36)	23 x 75.5	100

Vial Kits - Headspace Screw Top Vials

Vial Kits consist of selected vials with pre-assembled Screw Caps and Septa.

Cat. No.	Description	Dimensions (mm)	Unit
HEADSPACE VIALS 18mm SCREW TOP - ROUNDED BASE			
60-101540	Vial Kit - P/Nos. 60-100286 and 60-100916 20mL Headspace Vial, Screw Top, Clear Glass, Rounded Base + 18mm Magnetic Screw Cap (Silver) with pre-fitted Clear PTFE/Butyl Septa, (Shore A 50) Q-Clean	22.5 x 75.5	100
60-101541	Vial Kit - P/Nos. 60-100286-A and 60-100916 20mL Headspace Vial, Screw Top, Amber Glass, Rounded Base + 18mm Magnetic Screw Cap (Silver) with pre-fitted Clear PTFE/Butyl Septa, (Shore A 50) Q-Clean	22.5 x 75.5	100
60-101542	Vial Kit - P/Nos. 60-100286 and 60-100915 20mL Headspace Vial, Screw Top, Clear Glass, Rounded Base + 18mm Magnetic Screw Cap (Silver) with pre-fitted Clear PTFE/Blue Silicone Septa, (Shore A 40) Q-Clean	22.5 x 75.5	100
60-101543	Vial Kit - P/Nos. 60-100286-A and 60-100915 20mL Headspace Vial, Screw Top, Amber Glass, Rounded Base + 18mm Magnetic Screw Cap (Silver) with pre-fitted Clear PTFE/Blue Silicone Septa, (Shore A 40) Q-Clean	22.5 x 75.5	100

Magnetic Headspace Screw Caps and Septa, 18mm

A wide range of Magnetic Tin Plate and Poly-Mag Screw Caps are available, complete with the most popular range of Septa



MAGNETIC SCREW CAPS and SEPTA, 18mm

Cat. No.	Description	Unit
MAGNETIC SCREW CAPS with Pre-fitted SEPTA		
60-100910	18mm Magnetic Screw Cap (Silver) with Moulded Grey PTFE/Red Butyl Septa, 1.6mm (Shore A 55)	100
60-100911	18mm Magnetic Screw Cap (Silver) with High Temperature PTFE/Red Silicone Septa, 3mm (Shore A 45)	100
60-100912	18mm Magnetic Screw Cap (Silver) with White PTFE/Transparent Blue Silicone Septa, 1.3mm (Shore A 45)	100
60-100913	18mm Magnetic Screw Cap (Silver) with Blue PTFE/White Silicone Septa, 1.5mm (Shore A 55)	100
60-100914	18mm Magnetic Screw Cap (Silver) with Aluminium Foil/White Silicone Septa, 1.3mm (Shore A 50)	100
60-100915	18mm Magnetic Screw Cap (Silver) with Moulded Clear PTFE/Blue Silicone Septa, 3mm (Shore A 40)	100
60-100916	18mm Magnetic Screw Cap (Silver) with Moulded Clear PTFE/Butyl Septa, 3mm (Shore A 50)	100
60-100917	18mm Magnetic Screw Cap (Silver) with Grey PTFE/Red Butyl Septa, 1.6mm, (Shore A 55)	100

Cat. No.	Description	Unit
Septa for 18mm Magnetic Screw Caps		
60-100920	Clear PTFE/Blue Silicone Septa 17.5mm x 3mm, (Shore A 40)	100
60-100922	Blue PTFE/White Silicone Septa 17.5mm x 1.5mm, (Shore A 55)	100
60-100921	White PTFE/Transparent Blue Silicone Septa 17.5mm x 1.3mm, (Shore A 45)	100
60-100924	High Temperature PTFE/Red Silicone Septa, 17.5mm x 3mm, (Shore A 45)	100
60-100925	Grey PTFE/Red Butyl Septa, 17.5mm x 1.6mm, (Shore A 55)	100
60-100923	Aluminium Foil/White Silicone Septa, 17.5mm x 1.3mm, (Shore A 50)	100

POLYMAG MAGNETIC SCREW CAPS, 18mm

The PolyMag range of caps are an alternative to the standard metal 18mm screw caps. Manufactured from polypropylene with a built-in steel overlay, the unique design of these caps makes them fully compatible with glass or plastic 18mm thread vials and provides an excellent seal between the cap and vial.

Available with PTFE/Silicone liner with SPME Microcenter and in a range of other materials and thicknesses.

Suitable for Dynamic and Static Headspace techniques.

Not suitable for use where the vial oven temperature exceeds 130°C



Cat. No.	Description	Unit
POLYMAG SCREW CAPS with Pre-fitted Septa (Max Temp 130°C)		
60-100961	18mm PolyMag Screw Cap (Black) with Natural PTFE/White Silicone Septa, 3mm	100
60-100965	18mm PolyMag Screw Cap (Black) with Red PTFE/White Silicone Septa, 1.9mm	100
60-100962	18mm PolyMag Screw Cap (Black) with Blue PTFE/White Silicone Septa, 1.5mm	100
60-100964	18mm PolyMag Screw Cap (Black) with White PTFE/Transparent Blue Silicone Septa, 1.75mm	100
60-100960	18mm PolyMag Screw Cap (Black) with Blue PTFE/White Silicone Septa with SPME Microcenter	100
60-100963	18mm PolyMag Screw Cap (Black) with Clear PTFE/Red Butyl Septa, 3mm	100

Headspace / Storage Vial with 18mm Screw Thread

This 20mL clear glass screw top vial is suitable for headspace and/or storage purposes. For use with 18mm screw thread polypropylene caps.



Instrument compatibility

PerkinElmer HS40, HS 100, HS101 Turbomatrix, HS16, HS40, HS40XL, S40 Trap, HS110, HS101 Trap

Spark Alias

Teledyne Tekmar 7000, 7000HT, 7050, HT3

Thermo Scientific Trace 1300 Series

Cat. No.	Description	Dimensions (mm)	Unit
SCREW TOP VIAL			
60-100288	20mL Headspace Vial, Screw Top, Clear Glass, Rounded Base, 18mm Screw Thread, Q-Clean	23 x 75.5	100

Caps and Septa for 18mm Screw Thread Vials

Solid and Open Top Polypropylene Screw Caps with a range of Septa for Headspace/Storage Vials with 18mm Screw Thread



Cat. No.	Description	Unit
18mm Screw Caps with Pre-fitted Septa		
60-100302	18mm Open Top Screw Cap (Black) with Red PTFE/White Silicone Septa, 1.5mm, (Shore A 55) (For headspace)	100
60-100290	18mm Open Top Screw Cap (Black) with Grey PTFE/Red Butyl Septa, 1.6mm, (Shore A 55) (For headspace)	100
60-100291	18mm Open Top Screw Cap (Black) with White PTFE/Transparent Blue Silicone Septa, 1.5mm, (Shore A 55) (For headspace)	100
60-100292	18mm Open Top Screw Cap (Black) with Aluminium Foil/White Silicone Septa, 1.3mm, (Shore A 50) (For headspace)	100
60-100293	18mm Solid Top Screw Cap (Black) with Grey PTFE/Red Butyl Septa, 1.6mm, (Shore A 55) (For storage)	100
60-100294	18mm Solid Top Screw Cap (Black) with Grey Butyl Septa, 3mm, (Shore A 48) (For storage)	100

Cat. No.	Description	Unit
18mm Screw Caps - No Septa		
60-100300	18mm Open Top Screw Cap (Black), Polypropylene, Unlined	100
60-100301	18mm Solid Top Screw Cap (Black), Polypropylene, Unlined	100
Septa for 18mm Screw Caps		
60-100295	Clear PTFE/Natural Rubber Septa, 16.7mm x 1.3mm (Shore A 60)	100
60-100296	Black Viton Septa, 16.7mm x 1mm (Shore A 70)	100
60-100297	Grey PTFE/Red Butyl Septa, 16.7mm x 1.6mm (Shore A 55)	100
60-100298	Aluminium Foil/White Silicone Septa, 16.7mm x 1.3mm (Shore A 50)	100
60-100299	Grey Butyl Septa, 16.7mm x 3mm (Shore A 48)	100

Headspace Vials, 20mm Crimp Top

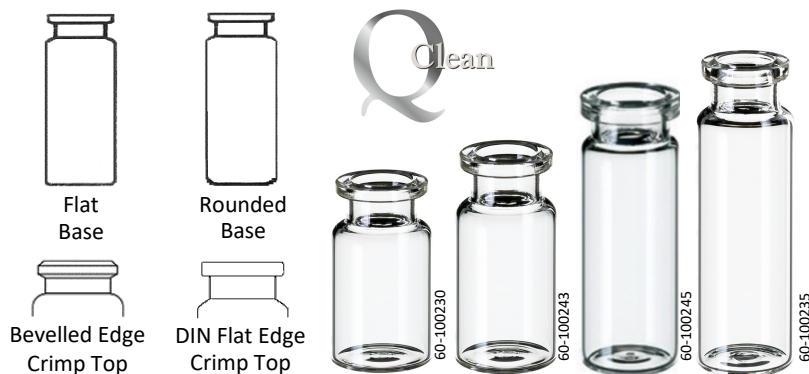
Flat Base

There are many headspace autosamplers on the market today, most of which use 6mL, 10mL or 20mL vials of the type detailed below.

The design of these vials provides maximum possible strength to withstand the higher positive internal pressures found in headspace analysis.

For those instruments using a magnetic system to transport the vials to and from the oven, we also offer magnetic crimp and precision thread screw caps, designed for that purpose.

Suitable for instruments by Agilent, Carlo Erba, DANI, Fisons, Metrohm and Varian



Cat. No.	Description	Dimensions (mm)	Unit
HEADSPACE VIALS 20mm CRIMP TOP - FLAT BASE			
60-100230	5mL Headspace Vial, Crimp Top, Clear Glass, Flat Base, 20mm Bevelled Edge Crimp, Q-Clean (For Metrohm)	21.7 x 38.2	100
60-100231	5mL Headspace Vial, Crimp Top, Clear Glass, Flat Base, 20mm DIN Flat Edge Crimp, Q-Clean (For Varian)	20 x 38	100
60-100233	10mL Headspace Vial, Crimp Top, Clear Glass, Flat Base, 20mm DIN Flat Edge Crimp, Q-Clean (For Varian)	20 x 54.5	100
60-100243	10mL Headspace Vial, Crimp Top, Clear Glass, Flat Base, 20mm DIN Flat Edge Crimp, Q-Clean (For Agilent, Carlo Erba, Dani, Fisons)	22.5 x 46	100
60-100232	10mL Headspace Vial, Crimp Top, Clear Glass, Flat Base, 20mm Bevelled Edge Crimp, Q-Clean (Agilent, Carlo Erba, Dani, Fisons)	22.75 x 46	100
60-100245	20mL Headspace Vial, Crimp Top, Clear Glass, Flat Base, 20mm DIN Flat Edge Crimp, Q-Clean (For Agilent, Carlo Erba, Dani, Fisons)	22.5 x 75.5	100
60-100235	20mL Headspace Vial, Crimp Top, Clear Glass, Flat Base, 20mm Bevelled Edge Crimp, Q-Clean (Agilent, Carlo Erba, Dani, Fisons)	22.75 x 75.5	100

Vial Kits - Headspace Crimp Top

Cat. No.	Description	Dimensions (mm)	Unit
HEADSPACE VIALS 20mm CRIMP TOP - FLAT BASE			
60-101534	Vial Kit - P/Nos. 60-100235 and 60-113100 20mL Headspace Vial, Crimp Top, Clear Glass, Flat Base + 20mm Aluminium Crimp Cap (Silver) with pre-fitted PTFE/Grey Butyl Septa, Q-Clean	22.75 x 75.5	100
60-101535	Vial Kit - P/Nos. 60-100235 and 60-113110 20mL Headspace Vial, Crimp Top, Clear Glass, Flat Base + 20mm Aluminium Crimp Cap (Silver) with pre-fitted PTFE/Silicone Septa, 3mm, Q-Clean	22.75 x 75.5	100
60-101536	Vial Kit - P/Nos. 60-100245 and 60-113100 20mL Headspace Vial, Crimp Top, Clear Glass, Flat Base + 20mm Aluminium Crimp Cap (Silver) with pre-fitted PTFE/Grey Butyl Septa, Q-Clean	22.50 x 75.5	100
HEADSPACE VIALS 20mm CRIMP TOP - ROUNDED BASE			
60-101532	Vial Kit - P/Nos. 60-100277 and 60-113100 20mL Headspace Vial, Crimp Top, Clear Glass, Rounded Base + 20mm Aluminium Crimp Cap (Silver) with pre-fitted PTFE/Grey Butyl Septa, Q-Clean	23 x 75	100
60-101533	Vial Kit - P/Nos. 60-100277 and 60-113110 20mL Headspace Vial, Crimp Top, Clear Glass, Rounded Base + 20mm Aluminium Crimp Cap (Silver) with pre-fitted PTFE/Silicone Septa, 3mm, Q-Clean	23 x 75	100

Headspace Vials, 20mm Crimp Top

Rounded Base

There are many headspace autosamplers on the market today, most of which use 10mL or 20mL vials of the type detailed below with either a flat or rounded base.

The design of these vials provides maximum possible strength to withstand the higher positive internal pressures found in headspace analysis.

For those instruments using a magnetic system to transport the vials to and from the oven, we also offer magnetic crimp and screw caps designed for that purpose.

Suitable for instruments by Agilent, Atas, CTC PAL, Fisons, Gerstel, PerkinElmer, Shimadzu, Teledyne Tekmar, Thermo and Varian.

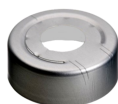
Plus new 20mL SPME Headspace Vials.



Cat. No.	Description	Dimensions (mm)	Unit
HEADSPACE VIALS 20mm CRIMP TOP - ROUNDED BASE			
60-100275	5mL Headspace Vial, Crimp Top, Clear Glass, Rounded Base, 20mm Bevelled Edge Crimp, Q-Clean (For PerkinElmer)	22 x 38.2	100
60-100270	10mL Headspace Vial, Crimp Top, Clear Glass, Rounded Base, 20mm DIN Flat Edge Crimp, Q-Clean (For Carlo Erba, CTC, Fisons, Varian CP)	22.5 x 46	100
60-100270-A	10mL Headspace Vial, Crimp Top, Amber Glass, Rounded Base, 20mm DIN Flat Edge Crimp, Q-Clean (For Carlo Erba, CTC, Fisons, Varian CP)	22.5 x 46	100
60-100276	10mL Headspace Vial, Crimp Top, Clear Glass, Rounded Base, 20mm Bevelled Edge Crimp, (For Agilent, CTC, DANI, Fisons, Shimadzu)	23 x 46	100
60-100280	20mL Headspace Vial, Longer Neck, Crimp Top, Clear Glass, Rounded Base, 20mm DIN Flat Edge Crimp, Q-Clean (For CTC PAL, Varian, Gerstel, Atas, Shimadzu TriPlus HS)	22.5 x 75.5	100
60-100280-A	20mL Headspace Vial, Longer Neck, Crimp Top, Amber Glass, Rounded Base, 20mm DIN Flat Edge Crimp, Q-Clean (For CTC PAL, Varian, Gerstel, Atas, Shimadzu TriPlus HS)	22.5 x 75.5	100
60-100279	20mL Headspace Vial, Crimp Top, Clear Glass, Rounded Base, 20mm Bevelled Edge Crimp, with Graduated Write-on Patch, Q-Clean (For PerkinElmer, Tekmar)	23 x 75.5	100
60-100277	20mL Headspace Vial, Crimp Top, Clear Glass, Rounded Base, 20mm Bevelled Edge Crimp, (For Agilent, CTC, DANI, Fisons, Perkin Elmer, Shimadzu)	23 x 75	100
60-100278	20mL Headspace Vial, Crimp Top, Clear Glass, Rounded Base, 20mm Bevelled Edge Crimp, Q-Clean (For PerkinElmer, Tekmar)	23 x 75.5	100
60-100278-A	20mL Headspace Vial, Crimp Top, Amber Glass, Rounded Base, 20mm Bevelled Edge Crimp, Q-Clean (For PerkinElmer, Tekmar)	23 x 75.5	100
60-100281	20mL SPME Headspace Vial, Crimp Top, Clear Glass, Rounded Base, 20mm Special Thicker Crimp neck for thinner septa, Q-Clean (For SPME, CTC PAL)	22.5 x 75.5	100
60-100281-A	20mL SPME Headspace Vial, Crimp Top, Amber Glass, Rounded Base, 20mm Special Thicker Crimp neck for thinner septa, Q-Clean (For SPME, CTC PAL)	22.5 x 75.5	100

Aluminium Crimp Caps and Septa, 20mm

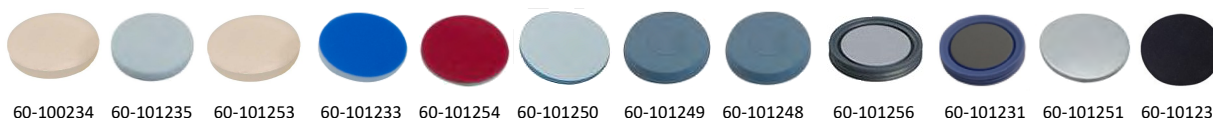
ALUMINIUM CRIMP CAPS, 20mm

60-100602
Open Hole60-100604
Pressure Release
Headspace60-100625
Centre Tear Off60-100630
Complete Tear Off

Cat. No.	Description	Unit
CRIMP CAPS without Septa		
60-100602	20mm Aluminium Crimp Cap, (Silver), Open 10mm Hole *	100
60-100604	20mm Aluminium Pressure Release Headspace Crimp Cap (Silver), Open 8mm Hole	100
60-100625	20mm Aluminium Crimp Cap, (Silver), Centre Tear Out *	100
60-100630	20mm Aluminium Crimp Cap, (Silver) Complete Tear Off *	100

* Caps are also available in (-B) Blue, (-G) Green, (-R) Red and (-Y) Gold - please state alternative colour required

SEPTA for 20mm CRIMP CAPS

See Page 55
for Stoppers

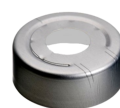
Cat. No.	Description	Unit
60-101234	Beige PTFE/White Silicone Septa Temp: -60 to 200°C. Shore A 45. Popular on Shimadzu instruments, 3mm	100
60-101235	Beige PTFE/White Silicone Septa (HT Grade) Temp: -60 to 200°C. Shore A 45, 3.2mm, Purest synthetic rubber for critical analysis work	100
60-101253	Beige PTFE/Cream Silicone Q-SEP™ Septa Temp: -60 to 200°C. Shore A 38, Soft for easy penetration, 3.2mm. Purest synthetic rubber (Q-SEP™) for critical analysis work.	100
60-101233	Blue PTFE/White Silicone Septa Temp: -40°C - 240°C. Shore A 55, 1.5mm	100
60-101254	PTFE/Red Silicone Septa Temp: -60°C to 300°C. Shore A 45, 3mm. For high temperature areas in Headspace analysis	100
60-101250	White PTFE/Transparent Blue Silicone Septa Temp: -60 to 200°C. Shore A 45, 3mm. Soft septa for easy penetration. Purest synthetic rubber, used in critical analysis.	100
60-101249	Grey Butyl Moulded Septa Temp: -40 to 120°C. Shore A 50, 3mm. Only suitable for uncritical analysis	100
60-101248	PTFE/Grey Butyl Septa Temp: -40 to 120°C. Shore A 50, 3mm. Suitable for more critical analysis due to PTFE lamination	100
60-101256	Pharma-Fix Moulded PTFE/Butyl Septa Temp: -40 to 120°C. Shore A 50, 3mm. Special Septa, moulded Butyl/PTFE liner is only laminated with PTFE in the contact area towards the sample. The elastic Butyl outer ring achieves a very tight seal against the glass rim of the vial.	100
60-101231	Pharma-Fix Moulded PTFE/Silicone Septa Temp: -60 to 200°C. Shore A 35, 3mm. Special Septa, moulded Silicone/PTFE liner is only laminated with PTFE in the contact area towards the sample. The elastic Silicone outer ring achieves a very tight seal against the glass rim of the vial.	100
60-101251	Aluminium Foil/White Silicone Septa Face of septa is covered with Aluminium Foil. Temp: -60 to 220°C. Shore A 50, 3mm. Same chemical and physical properties as PTFE laminated septa. Often used on PerkinElmer instruments	100
60-101232	Black Viton 1A Septa Shore A 70, 3mm.	100

Aluminium Crimp Caps with Pre-fitted Septa, 20mm

ALUMINIUM CRIMP CAPS, 20mm



Open Hole



Pressure Release
Headspace



Centre Tear Off



Complete Tear Off

Cat. No.	Description	Unit
20mm Aluminium Crimp Cap (Silver), Open 10mm Hole		
60-113117	Pre-fitted with Butyl Septa, 3mm (Shore A 50)	100
60-113100	Pre-fitted with PTFE/Grey Butyl Septa. 3mm (Shore A 50)	100
60-113110	Pre-fitted with Beige PTFE/White Silicone Septa, 3mm (Shore A 45)	100
60-113115	Pre-fitted with Beige PTFE/White Silicone Septa (HT Grade), 3.2mm (Shore A 45)	100
60-100701	Pre-fitted with Beige PTFE/Cream Silicone Q-SEP™ Septa , 3.2mm (Shore A 38)	100
60-100693	Pre-fitted with UltraClean White PTFE/Transparent Blue Silicone Septa, 3mm (Shore A 45)	100
60-113105	Pre-fitted with Pharma-Fix Moulded Grey PTFE/Butyl Septa, 3mm (Shore A 50)	100
60-110800	Pre-fitted with Aluminium Foil/White Silicone Septa, 3mm (Shore A 50)	100

Cat. No.	Description	Unit
20mm Aluminium Pressure Release Headspace Crimp Cap (Silver), Open Hole		
60-113118	Pre-fitted with Butyl Septa, 3mm (Shore A 50)	100
60-113101	Pre-fitted with PTFE/Grey Butyl Septa. 3mm (Shore A 50)	100
60-113111	Pre-fitted with Beige PTFE/White Silicone Septa, 3mm (Shore A 45)	100
60-113116	Pre-fitted with Beige PTFE/White Silicone Septa (HT Grade), 3.2mm (Shore A 45)	100
60-100702	Pre-fitted with Beige PTFE/Cream Silicone Q-SEP™ Septa , 3.2mm (Shore A 45)	100
60-100694	Pre-fitted with UltraClean White PTFE/Transparent Blue Silicone Septa, 3mm (Shore A 45)	100
60-113106	Pre-fitted with Pharma-Fix Moulded Grey PTFE/Butyl Septa, 3mm (Shore A 50)	100
60-110801	Pre-fitted with Aluminium foil/White Silicone Septa, 3mm (Shore A 50)	100

Cat. No.	Description	Unit
20mm Aluminium Centre Tear Off Crimp Cap (Silver)		
60-113119	Pre-fitted with Butyl Septa, 3mm (Shore A 50)	100
60-113102	Pre-fitted with PTFE/Grey Butyl Septa. 3mm (Shore A 50)	100
60-113112	Pre-fitted with Beige PTFE/White Silicone Septa, 3mm (Shore A 45)	100
60-100703	Pre-fitted with Beige PTFE /White Silicone Q-SEP™ Septa , 3mm, (Shore A 38)	100
60-100698	Pre-fitted with Ultraclean White PTFE/Transparent Blue Silicone Septa, 3mm (Shore A 45)	100
60-113107	Pre-fitted with Pharma-Fix Moulded Grey PTFE/Butyl Septa, 3mm (Shore A 50)	100
60-110805	Pre-fitted with Aluminium Foil/White Silicone Septa, 3mm (Shore A 50)	100

Cat. No.	Description	Unit
20mm Aluminium Complete Tear Off Crimp Cap (Silver)		
60-113120	Pre-fitted with Butyl Septa, 3mm (Shore A 50)	100
60-113103	Pre-fitted with PTFE/Grey Butyl Septa. 3mm, (Shore A 50)	100
60-113113	Pre-fitted with Beige PTFE/White Silicone Septa, 3mm (Shore A 45)	100
60-100704	Pre-fitted with Beige PTFE /White Silicone Q-SEP™ Septa , 3mm, (Shore A 38)	100
60-110806	Pre-fitted with Ultraclean White PTFE/Transparent Blue Silicone Septa, 3mm (Shore A 45)	100
60-113108	Pre-fitted with Pharma-Fix Moulded Grey PTFE/Butyl Septa, 3mm (Shore A 50)	100
60-110807	Pre-fitted with Aluminium Foil/White Silicone Septa, 3mm (Shore A 50)	100

Magnetic Headspace Crimp Caps and Septa, 20mm

Magnetic Tin Plate and Bi-Metallic Crimp Caps are available.
Caps are supplied with or without a range of pre-fitted septa



60-100605
Magnetic
Crimp Cap



60-100678-B
Bi-Metallic
Crimp Cap



60-100678-R
Bi-Metallic
Crimp Cap

MAGNETIC CRIMP CAPS, 20mm

Cat. No.	Description	Unit
20mm MAGNETIC CRIMP CAP (Silver), Open 8mm or 5mm Hole		
60-100603	20mm Magnetic Crimp Cap (Silver), without septa (Open 5mm hole)	100
60-100605	20mm Magnetic Crimp Cap (Silver), without septa (Open 8mm hole)	100
60-100680	Pre-fitted with Moulded Grey Butyl Septa, 3mm (Shore A 55)	100
60-100669	Pre-fitted with PTFE/Grey Butyl Septa, 3mm (Shore A 50)	100
60-100670	Pre-fitted with Pharma-Fix Moulded Grey PTFE/Butyl Septa, 3mm (Shore A 50)	100
60-100671	Pre-fitted with Beige PTFE/White Silicone Q-SEP™ Septa , 3mm (Shore A 45)	100
60-100672	Pre-fitted with Beige PTFE/White Silicone Septa, 3mm (Shore A 45)	100
60-100689	Pre-fitted with Clear PTFE/Red Silicone Septa for UHT Analysis (300°C), Ultra-Clean, 3mm (Open 5mm hole) (Shore A 45)	100
60-110803	Pre-fitted with Aluminium Foil/White Silicone Septa, 3mm, (Shore A 50)	100
60-110802	Pre-fitted with Aluminium Foil/White Silicone Septa, 3mm, (Shore A 50) (Open 5mm hole)	100
60-100695	Pre-fitted with UltraClean White PTFE/Transparent Blue Silicone Septa, Ultra-Clean, 3mm (Shore A 45)	100

Cat. No.	Description	Unit
20mm MAGNETIC CRIMP CAP (Silver), Open 8mm Hole FOR SPME VIALS Thinner septa for ease of penetration with SPME applications		
60-100661	Pre-Fitted with Blue PTFE/White Silicone Septa, 1.5mm (Shore A 55)	100
60-100662	Pre-Fitted with Black Viton 1A Septa, 1mm (Shore A 70)	100
60-100663	Pre-Fitted with Aluminium Foil/White Silicone Septa, 1.3mm (Shore A 50)	100

Cat. No.	Description	Unit
20mm BI-METALLIC MAGNETIC CRIMP CAP (Blue), Open 8mm Hole		
60-100678-B	20mm Bi-Metallic Magnetic Crimp Cap (Blue), without septa *	100
60-100673-B	Pre-fitted with Butyl Septa, 3mm (Shore A 50) *	100
60-100679-B	Pre-fitted with PTFE/Grey Butyl Septa. 3mm (Shore A 50) *	100
60-100690-B	Pre-fitted with Pharma-Fix Moulded Grey PTFE/Butyl Septa, 3mm (Shore A 50) *	100
60-100691-B	Pre-fitted with Beige PTFE/White Silicone Septa (HT Grade), 3mm (Shore A 45) *	100
60-100692-B	Pre-fitted with Beige PTFE/White Silicone Septa, 3mm (Shore A 45) *	100
60-100688-B	Pre-fitted with Beige PTFE/Cream Silicone Q-SEP™ Septa 3mm, (Shore A 38) *	100
60-110804-B	Pre-fitted with Aluminium Foil/White Silicone Septa, 3mm (Shore A 50) *	100
60-100696-B	Pre-fitted with UltraClean White PTFE/Transparent Blue Silicone Septa, 3mm (Shore A 45)	100

* Caps also available in (-R) Red - please state alternative colour if required

EPA / VOA Vials with Open Top Screw Caps and Septa, 24mm Thread

EPA/VOA Vials are designed for water sample collection for Volatile Organic Analysis.

- Manufactured from clear or amber borosilicate glass
- Supplied fully assembled with white Polypropylene **OPEN TOP screw caps Pre-fitted with 3mm PTFE/Silicone Septa.**
- Available as Standard, Pre-cleaned or Pre-cleaned and Certified in accordance with EPA protocols



Class 1 (Standard) Processed and packaged under strict ISO Quality procedures. These vials are not pre-cleaned or certified.

Class 2 (Pre-cleaned) Containers are processed according to EPA recommended wash procedures. Washed with laboratory grade biodegradable, non-phosphate detergent, rinsed with ASTM Type 1 de-ionised water, oven dried and assembled in a contaminate-free environment. The exterior of each case is labelled with the lot number. Each case contains a copy of the wash 'SOP'.

Class 3 (Certified) Containers are processed according to EPA recommended wash procedures. Washed with laboratory grade biodegradable, non-phosphate detergent, rinsed with ASTM Type 1 de-ionised water, oven dried and assembled in a contaminate-free environment. The exterior of each case is labelled with the lot number. Each case contains a Certificate of Analysis. An independent laboratory is used to certify the container's cleanliness, assuring impartial results.



WITH OPEN TOP SCREW CAPS - 24mm

Product	Capacity	Glass	Dimensions	Cat. No. Pk/72	Cat. No. Pk/100
STANDARD - Class 1					
EPA/VOA Vial	20mL	Clear	28 x 56	60-101720	60-101720-100
EPA/VOA Vial	20mL	Amber	28 x 56	60-101720-A	60-101720-A-100
EPA/VOA Vial	40mL	Clear	28 x 95	60-101706	60-101706-100
EPA/VOA Vial	40mL	Amber	28 x 95	60-101706-A	60-101706-A-100
EPA/VOA Vial	60mL	Clear	28 x 140	60-101730	60-101730-100
EPA/VOA Vial	60mL	Amber	28 x 140	60-101730-A	60-101730-A-100
PRECLEANED - Class 2					
EPA/VOA Vial	20mL	Clear	28 x 56	60-101721	----
EPA/VOA Vial	20mL	Amber	28 x 56	60-101721-A	----
EPA/VOA Vial	40mL	Clear	28 x 95	60-101707	60-101707-100
EPA/VOA Vial	40mL	Amber	28 x 95	60-101707-A	60-101707-A-100
EPA/VOA Vial	60mL	Clear	28 x 140	60-101731	----
EPA/VOA Vial	60mL	Amber	28 x 140	60-101731-A	----
PRECLEANED and CERTIFIED - Class 3					
EPA/VOA Vial	20mL	Clear	28 x 56	60-101722	----
EPA/VOA Vial	20mL	Amber	28 x 56	60-101722-A	----
EPA/VOA Vial	40mL	Clear	28 x 95	60-101708	60-101708-100
EPA/VOA Vial	40mL	Amber	28 x 95	60-101708-A	60-101708-A-100
EPA/VOA Vial	60mL	Clear	28 x 140	60-101732	----
EPA/VOA Vial	60mL	Amber	28 x 140	60-101732-A	----

EPA / VOA Vials with Solid Top Screw Caps and Septa, 24mm Thread

EPA/VOA Vials are designed for water sample collection for Volatile Organic Analysis.

- Manufactured from clear or amber borosilicate glass
- Supplied fully assembled with white Polypropylene **SOLID TOP screw caps pre-fitted with PTFE Liners.**
- Available as Standard, Pre-cleaned or Pre-cleaned and Certified in accordance with EPA protocols



Class 1 (Standard) Processed and packaged under strict ISO Quality procedures. These vials are not pre-cleaned or certified.

Class 2 (Pre-cleaned) Containers are processed according to EPA recommended wash procedures. Washed with laboratory grade biodegradable, non-phosphate detergent, rinsed with ASTM Type 1 de-ionised water, oven dried and assembled in a contaminate-free environment. The exterior of each case is labelled with the lot number. Each case contains a copy of the wash 'SOP'.

Class 3 (Certified) Containers are processed according to EPA recommended wash procedures. Washed with laboratory grade biodegradable, non-phosphate detergent, rinsed with ASTM Type 1 de-ionised water, oven dried and assembled in a contaminate-free environment. The exterior of each case is labelled with the lot number. Each case contains a Certificate of Analysis. An independent laboratory is used to certify the container's cleanliness, assuring impartial results.



WITH SOLID TOP SCREW CAPS - 24mm

Product	Capacity	Glass	Dimensions	Cat. No. Pk/72	Cat. No. Pk/100
STANDARD - Class 1					
EPA/VOA Vial	20mL	Clear	28 x 56	60-101750	60-101750-100
EPA/VOA Vial	20mL	Amber	28 x 56	60-101750-A	60-101750-A-100
EPA/VOA Vial	40mL	Clear	28 x 95	60-101740	60-101740-100
EPA/VOA Vial	40mL	Amber	28 x 95	60-101740-A	60-101740-A-100
EPA/VOA Vial	60mL	Clear	28 x 140	60-101753	60-101753-100
EPA/VOA Vial	60mL	Amber	28 x 140	60-101753-A	60-101753-A-100
PRECLEANED - Class 2					
EPA/VOA Vial	20mL	Clear	28 x 56	60-101751	60-101751-100
EPA/VOA Vial	20mL	Clear	28 x 56	60-101751-a	60-101751-A-100
EPA/VOA Vial	40mL	Clear	28 x 95	60-101741	60-101741-100
EPA/VOA Vial	40mL	Amber	28 x 95	60-101741-A	60-101741-A-100
EPA/VOA Vial	60mL	Clear	28 x 140	60-101754	60-101754-100
EPA/VOA Vial	60mL	Amber	28 x 140	60-101754-A	60-101754-A-100
PRECLEANED and CERTIFIED - Class 3					
EPA/VOA Vial	20mL	Clear	28 x 56	60-101752	60-101752-100
EPA/VOA Vial	20mL	Amber	28 x 56	60-101752-A	60-101752-A-100
EPA/VOA Vial	40mL	Clear	28 x 95	60-101742	60-101742-100
EPA/VOA Vial	40mL	Amber	28 x 95	60-101742-A	60-101742-A-100
EPA/VOA Vial	60mL	Clear	28 x 140	60-101755	60-101755-100
EPA/VOA Vial	60mL	Amber	28 x 140	60-101755-A	60-101755-A-100

Total Organic Carbon (TOC) Vial Kits - Certified (<10ppb), 24mm Thread

Greyhound TOC (Total Organic Carbon) Certified Screw Top Vial Kits are manufactured to the highest specifications and are tested and certified to contribute a background Total Organic Carbon level of **<10ppb**, thus ensuring the accuracy of your results.

Supplied complete with Cap Covers to protect screw caps and Septa from particulates. The detailed Certificate of Analysis is included together with lot number for traceability purposes.



Cat. No.	Description	Dimensions (mm)	Unit
60-101810	40mL TOC Certified Vials, Clear Glass with 24-414mm Open Top Grey Polypropylene Screw Cap, 3mm PTFE/Silicone Septa and Cap Cover	28 x 95	72

Environmental Storage Vials, 4mL - 60mL

Environmental Storage Vials are manufactured from clear or amber borosilicate glass.

A range of Caps and Septa are available on pages 48 - 51 to provide maximum choice when selecting your vial / cap combination



Cat. No.	Description	Dimensions (mm)	Unit
Vials - Class 1			
60-100162	4mL Clear Environmental Storage Vial, 13-425mm Thread, Q-Clean	15 x 46	100
60-100162-A	4mL Amber Environmental Storage Vial, 13-425mm Thread, Q-Clean	15 x 46	100
60-100204	8mL Clear Environmental Storage Vial, 15-425mm Thread, Q-Clean	17 x 61	100
60-100204-A	8mL Amber Environmental Storage Vial, 15-425mm Thread, Q-Clean	17 x 61	100
60-100206	12mL Clear Environmental Storage Vial, 15-425mm Thread, Q-Clean	19 x 65	100
60-100206-A	12mL Amber Environmental Storage Vial, 15-425mm Thread, Q-Clean	19 x 65	100
60-101832	16mL Clear Environmental Storage Vial, 18-400mm Thread, Q-Clean	20.6 x 71	100
60-101831	20mL Clear Environmental Storage Vial, 20-400mm Thread, Q-Clean	22.7 x 86	100
60-101827	20mL Clear Environmental Storage Vial, 24-400mm Thread, Q-Clean	28 x 56	100
60-101827-A	20mL Amber Environmental Storage Vial, 24-400mm Thread, Q-Clean	28 x 56	100
60-101830	30mL Clear Environmental Storage Vial, 24-400mm Thread, Q-Clean	28 x 72	100
60-101830-A	30mL Amber Environmental Storage Vial, 24-400mm Thread, Q-Clean	28 x 72	100
60-101828	40mL Clear Environmental Storage Vial, 24-400mm Thread, Q-Clean	28 x 95	100
60-101828-A	40mL Amber Environmental Storage Vial, 24-400mm Thread, Q-Clean	28 x 95	100
60-101829	60mL Clear Environmental Storage Vial, 24-400mm Thread, Q-Clean	28 x 140	100
60-101829-A	60mL Amber Environmental Storage Vial, 24-400mm Thread, Q-Clean	28 x 140	100

Screw Caps and Septa, 13mm

A range of Caps and Septa are available to provide maximum choice when selecting your vial / cap combination



Cat. No.	Description	Unit
13-425mm Screw Caps		
60-100861	13-425mm Open Top, Black Polypropylene Cap Unlined	100
60-100861-W	13-425mm Open Top, White Polypropylene Cap Unlined	100
60-100885	13-425mm Solid Top, Black Polypropylene Cap Unlined	100
60-100885-W	13-425mm Solid Top, White Polypropylene Cap Unlined	100

Cat. No.	Description	Unit
Septa for 13-425mm Screw Caps		
60-101203	White PTFE, 12mm x 0.20mm (Shore A 53)	100
60-101215	PTFE/Natural Rubber, 12mm x 1.3mm (Shore A 60)	100
60-101216	Grey PTFE/Cream Butyl Rubber, 12mm x 1.3mm (Shore A 55)	100
60-101221	Red PTFE/White Silicone/Red PTFE, 12mm x 1mm (Shore A 45)	100
60-101230	Red PTFE/White Silicone, 12mm x 1.3mm (Shore A 45)	100
60-101241	Blue PTFE/White Silicone, Pre-Slit, 12mm x 1mm (Shore A 55)	100

Cat. No.	Description	Unit
13-425mm Screw Caps with Pre-fitted Septa		
60-101323	13-425mm Open Top Screw Cap, Black Polypropylene with PTFE/Red Rubber Septa, 1.3mm (Shore A 60)	100
60-101328	13-425mm Open Top Screw Cap, Black Polypropylene with Red PTFE/White Silicone/Red PTFE Septa, 1mm (Shore A 45)	100
60-101348	13-425mm Open Top Screw Cap, Black Polypropylene with Blue PTFE/White Silicone Septa, 1.5mm, Pre-slit (Shore A 55)	100
60-101355	13-425mm Open Top Screw Cap, Black Polypropylene with Red PTFE/White Silicone Septa, 1.5mm (Shore A 45)	100
60-101356	13-425mm Open Top Screw Cap, Black Polypropylene with Grey PTFE/Red Butyl Septa, 1.3mm (Shore A 55)	100
60-101327	13-425mm Open Top Screw Cap, Black Polypropylene with Red PTFE/Cream Silicone Septa, 1.5mm (Shore A 55)	100
60-110780	13-425mm Solid Top Screw Cap, Black Polypropylene with PTFE/Natural Rubber Septa, 1.3mm (Shore A 50)	100
60-110781	13-425mm Solid Top Screw Cap, Black Polypropylene with Grey PTFE/Cream Butyl Septa, 1.3mm (Shore A 55)	100
60-110782	13-425mm Solid Top Screw Cap, Black Polypropylene with Red PTFE/Cream Silicone Septa, 1.5mm (Shore A 55)	100
60-110783	13-425mm Solid Top Screw Cap, Black Polypropylene with PTFE/F217 Foam Liner (Shore A 50)	100
60-110783-W	13-425mm Solid Top Screw Cap, White Polypropylene with PTFE/F217 Foam Liner (Shore A 50)	100

Screw Caps and Septa, 15mm to 20mm

A range of Caps and Septa are available to provide maximum choice when selecting your vial / cap combination



Cat. No.	Description	Unit
15-425mm Screw Caps		
60-100866	15-425mm Black Open Top Screw Cap	100
60-100887	15-425mm Black Solid Top Screw Cap	100

Cat. No.	Description	Unit
Septa for 15-425mm Caps		
60-110752	White PTFE Septa, 14mm x 0.25mm (Shore A 53)	100
60-110753	Black Viton Septa, 14mm x 1mm (Shore A 70)	100
60-110754	Grey PTFE/Red Butyl Septa, 14mm x 1mm (Shore A 55)	100
60-110755	Aluminium Foil/White Silicone Septa, 14mm x 1.3mm (Shore A 50)	100
60-110756	Grey Butyl Septa, 14mm x 2mm (Shore A 48)	100

Cat. No.	Description	Unit
15-425mm Screw Caps with Pre-fitted Septa		
60-101357	15-425mm Open Top Screw Cap, Black Polypropylene with PTFE/Silicone Septa, 1.65mm (Shore A 45)	100
60-110770	15-425mm Solid Top Screw Cap, Black Polypropylene with PTFE/Natural Rubber Septa, 1.3mm	100
60-110771	15-425mm Solid Top Screw Cap, Black Polypropylene with Grey PTFE/Red Butyl Septa, 1.5mm	100
60-110772	15-425mm Solid Top Screw Cap, Black Polypropylene with Black Viton Septa, 1mm	100
60-110773	15-425mm Solid Top Screw Cap, Black Polypropylene with Aluminium Foil/Silicone Septa, 1.3mm	100
60-110774	15-425mm Solid Top Screw Cap, Black Polypropylene with Grey Butyl Septa, 2mm	100
60-110775	15-425mm Solid Top Screw Cap, Black Polypropylene with PTFE/F217 Foam Liner	100
60-110775-W	15-425mm Solid Top Screw Cap, White Polypropylene with PTFE/F217 Foam Liner	100

Cat. No.	Description	Unit
18-400mm Screw Caps with Pre-fitted Septa		
60-110784	18-400mm Solid Top Screw Cap, Black Polypropylene with Grey PTFE/Cream Butyl Septa, 1.6mm, (Shore A 55)	100
60-110785	18-400mm Solid Top Screw Cap, Black Polypropylene with Red PTFE/White Silicone Septa, 1.5mm, (Shore A 55)	100
60-110786	18-400mm Solid Top Screw Cap, Black Polypropylene with Dark Grey Butyl Septa, 1.5mm, (Shore A 48)	100

Cat. No.	Description	Unit
20-400mm Screw Caps with Pre-fitted Septa		
60-110787	20-400mm Solid Top Screw Cap, White Polypropylene with PTFE/Natural Rubber Septa, 1.3mm, (Shore A 60)	100
60-110788	20-400mm Solid Top Screw Cap, White Polypropylene with Grey PTFE/Cream Butyl Septa, 1.3mm, (Shore A 55)	100
60-110789	20-400mm Solid Top Screw Cap, White Polypropylene with Red PTFE/White Silicone Septa, 1.3mm, (Shore A 45)	100

Screw Caps and Septa, 24mm

A range of Caps and Septa are available to provide maximum choice when selecting your vial / cap combination



Cat. No.	Description	Unit
24-400mm Open Top Screw Caps		
60-102151-W	24-400mm Open Top Screw Cap, White Polypropylene, Unlined	100
60-102102-W	24-400mm Open Top Screw Cap, White Polypropylene with Red Butyl/grey PTFE Septa, 2.5mm, (Shore A 55)	100
60-102100-W	24-400mm Open Top Screw Cap, White Polypropylene with Beige PTFE/White Silicone Septa, 3.2mm, EPA Quality, (Shore A 45)	100
60-102103-W	24-400mm Open Top Screw Cap, White Polypropylene with Beige PTFE/Natural Silicone Q-SEP™ Septa, 3mm, EPA Quality, (Shore A 38)	100
60-102104-W	24-400mm Open Top Screw Cap, White Polypropylene with Aluminium Foil/White Silicone Septa, 3mm, (Shore A 50)	100
60-102105-W	24-400mm Open Top Screw Cap, White Polypropylene with Natural Silicone/Beige PTFE Septa, 3.2mm, Cross-Slit, (Shore A 45)	100
60-102101-W	24-400mm Open Top Screw Cap, White Polypropylene with Bonded 3.2mm PTFE/Silicone Septa, EPA Quality, (Shore A 45)	100

24-400mm Solid Top Screw Caps

60-100891	24-400mm Solid Top, Black Polypropylene Cap Unlined	100
60-100891-W	24-400mm Solid Top, White Polypropylene Cap Unlined	100
60-102544-W	24-400mm Solid Top, White Polypropylene Cap / PTFE Liner	100
60-102106-W	24-400mm Solid Top Screw Cap, White Polypropylene with Red Butyl/Grey PTFE Septa, 2.5mm, (Shore A 55)	100
60-102107-W	24-400mm Solid Top Screw Cap, White Polypropylene with Beige PTFE/Cream Silicone Q-SEP™ Septa, 3mm, (Shore A 38)	100
60-102108-W	24-400mm Solid Top Screw Cap, White Polypropylene with Aluminium Foil/White Silicone Septa, 3mm, (Shore A 50)	100
60-102109-W	24-400mm Solid Top Screw Cap, White Polypropylene with Dark Grey Butyl Septa, 3mm, (Shore A 48)	100
60-102520	24-400mm Solid Top, Black Phenolic Cap / PE Cone Liner	100

Cat. No.	Description	Unit
24-414mm Screw Caps		
60-102152-W	24-414mm Open Top, White Polypropylene Cap, Unlined	100
60-100894-W	24-414mm Solid Top White Polypropylene Cap, Unlined	100
60-102153	24-414mm Open Top Screw Cap, White Polypropylene, with Bonded Beige PTFE/White Silicone Septa, EPA Quality, 3.2mm, (Shore A 45)	100

Cat. No.	Description	Unit
Septa for 24mm Screw Caps		
60-102128	PTFE Liner, 24mm, 0.25mm, (Shore A 53)	100
60-101255	Beige PTFE/Natural Silicone Q-SEP™ Septa, 22mm x 3mm, (Shore A 38)	100
60-101257	Grey PTFE/Red Butyl Septa, 22mm x 2.5mm, for 24mm Screw Thread Caps, (Shore A 55)	100
60-101258	Blue PTFE/White Silicone Septa, 22mm x 1.5mm, for 24mm Screw Thread Caps, Pre-Slit, (Shore A 55)	100
60-101259	Aluminium Foil/White Silicone Septa, 22mm, for 24mm Screw Thread Caps, 3mm (Shore A 50)	100
60-101260	Beige PTFE/Natural Silicone Septa, 22mm x 3.2mm, for 24mm Screw Thread Caps, EPA Quality, (Shore A 45)	100

Screw Caps and Septa, 24mm

POSI-Clean™ EPA/VOA Caps and Septa with 24-414mm Thread

POSI-Clean™ Caps for EPA/VOA Vials – offer a new innovative one-piece cap designed to reduce chemical and particulate contamination during sample collection. Resisting Chemical and environmental contamination in the field, ensures better analytical results. POSI-Clean™ reduces costs and ensures samples collected are unaffected by environmental conditions during transport back to the laboratory.

POSI-Clean™ Caps eliminate the need for multiple caps to be taken out in the field during sample collection. The fully interlocking cap cover design stays in place until it needs to be removed for analysis. The 24-414mm thread cap is lined with a **bonded** PTFE/Silicone Liner which has been pre-conditioned to meet EPA standards. The liner is only exposed when the POSI-Clean™ top is removed at the laboratory for analysis. The design dimensions conform to the existing caps eliminating the need for any additional packaging.



60-100970

Cat. No.	Description	Unit
60-100970	24-414mm POSI-Clean™ Screw Caps with Bonded PTFE/Silicone Septa (EPA Quality) and flip-off removable cover	100

Vial Racks

Stackable Vial Racks (60-101575) are made of PP and can be stacked together

Snap Racks (60-101570) are constructed of durable glass reinforced PP with a centre well which conveniently holds caps, seals etc. Racks simply clip together to increase capacity



60-101575

2 x 60-101570-W

Cat. No.	Description	Unit
60-101570-W	50 Position Vial Snap Rack White for 8mm Vials	5
60-101570-B	50 Position Vial Snap Rack Blue for 8mm Vials	5
60-101572	50 Position Vial Rack White for 12mm Vials	5
60-101573	50 Position Vial Rack Blue for 12mm Vials	5
60-101575	50 Position Stackable Vial Rack for 12mm vials - Blue	1
60-101576	51 Position Stackable Vial Rack for 15mm vials - Blue	1

Injection Vials, 13mm Crimp

Highest quality Injection Vials as per DIN/ISO.

Manufactured exclusively from 1st Hydrolytic tubular glass.

Packaged in class 100,000 Cleanroom with the 'Q-Clean' Seal of approval, guaranteeing the high quality and cleanliness of the vials



60-113300

60-113300-A

Cat. No.	Description	Dimensions (mm)	Unit
60-113300	2mL Injection Vial, Clear Glass, 13mm Crimp Finish, (DIN ISO), Q-Clean	16 x 35	352
60-113300-A	2mL Injection Vial, Amber Glass, 13mm Crimp Finish, (DIN ISO), Q-Clean	16 x 35	352

Crimp Caps, Stoppers, Septa - 13mm



60-113400

60-113401

60-113500

60-113501

60-113510-R

60-100643

Cat. No.	Description	Unit
Aluminium Crimp Caps 13mm		
60-113500	13mm Aluminium Crimp Cap, (Silver) Complete Tear-off	100
60-113501	13mm Aluminium Crimp Cap, (Silver) Centre Tear-off	100
60-113510-R	13mm Aluminium Flip-top Crimp Cap, Centre Tear-off with Red Flip-Off Cap	100
Stoppers for Crimp Caps 13mm		
60-113400	13mm Injection Stoppers, Grey Bromobutyl (Shore A 45)	100
60-113401	13mm Freeze Drying Stopper, Grey Bromobutyl	100
Aluminium Crimp Caps with Pre-fitted Septa - 13mm		
60-100642	13mm Aluminium Crimp Cap, (Silver) with PTFE Septa, 0.25mm (Shore A 53)	100
60-100657	13mm Aluminium Crimp Cap, (Silver) with PTFE/Butyl Rubber Septa, 1mm (Shore A 55)	100
60-100687	13mm Aluminium Crimp Cap, (Silver) with Red PTFE/White Silicone Septa (Shore A 55)	100
60-100711	13mm Aluminium Crimp Cap, (Silver) with Red PTFE/White Silicone/Red PTFE Septa (Shore A 45)	100
60-100643	13mm Aluminium Crimp Cap, (Silver) with Grey PTFE /Red Butyl Septa	100
60-100644	13mm Aluminium Crimp Cap, (Silver) Centre Tear-off with Grey PTFE/Red Butyl Septa	100

Special pricing is available for bulk and call-off orders, please contact our sales team for a quotation

Injection Vials, 20mm Crimp Finish - Tubular Glass

Highest quality Injection Vials as per DIN/ISO.

Manufactured exclusively from 1st Hydrolytic tubular glass.

Packaged in class 100,000 Cleanroom with the 'Q-Clean' Seal of approval, guaranteeing the high quality and cleanliness of these vials



Cat. No.	Description	Dimensions (mm)	Unit
60-113305	6mL Injection Vial, Clear Glass, 20mm Crimp Finish, (DIN ISO), Q-Clean	22 x 40	186
60-113305-A	6mL Injection Vial, Amber Glass, 20mm Crimp Finish, (DIN ISO), Q-Clean	22 x 40	186
60-113306	10mL Injection Vial, Clear Glass, 20mm Crimp Finish, (DIN ISO), Q-Clean	24 x 45	154
60-113306-A	10mL Injection Vial, Amber Glass, 20mm Crimp Finish, (DIN ISO), Q-Clean	24 x 45	154
60-113307	20mL Injection Vial, Clear Glass, 20mm Crimp Finish, (DIN ISO), Q-Clean	30 x 55	91
60-113307-A	20mL Injection Vial, Amber Glass, 20mm Crimp Finish, (DIN ISO), Q-Clean	30 x 55	91
60-113308	30mL Injection Vial, Clear Glass, 20mm Crimp Finish, (DIN ISO), Q-Clean	30 x 75	91
60-113308-A	30mL Injection Vial, Amber Glass, 20mm Crimp Finish, (DIN ISO), Q-Clean	30 x 75	91

Injection Vials, 20mm Crimp Finish - Moulded Glass

Highest quality Injection Vials, manufactured from smelting glass as per DIN/ISO.

According to Article 3.2.1 of the European Pharmacopoeia PH, corresponds to glass type 1 Eur.

Dust and germ free packaging

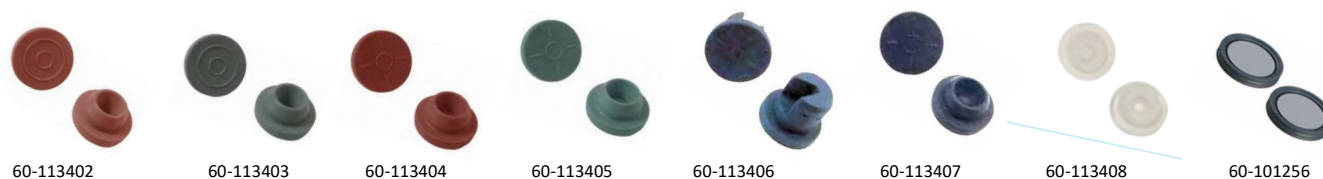


Cat. No.	Description	Dimensions (mm)	Unit
60-113310	20mL Injection Vial, Clear Glass, 1st Hydrolytic, 20mm Crimp Finish, (DIN ISO)	32 x 58	252
60-113310-A	20mL Injection Vial, Amber Glass, 1st Hydrolytic, 20mm Crimp Finish, (DIN ISO)	32x 58	252
60-113311	30mL Injection Vial,, Clear Glass, 1st Hydrolytic, 20mm Crimp Finish, (DIN ISO)	36 x 62	90
60-113311-A	30mL Injection Vial, Amber Glass, 1st Hydrolytic, 20mm Crimp Finish, (DIN ISO)	36 x 62	90
60-113312	50mL Injection Vial, Clear Glass, 1st Hydrolytic, 20mm Crimp Finish, (DIN ISO)	42.5 x 73	90
60-113312-A	50mL Injection Vial, Amber Glass, 1st Hydrolytic, 20mm Crimp Finish, (DIN ISO)	42.5 x 73	130
60-113313	100mL Injection Vial, Clear Glass, 1st Hydrolytic, 20mm Crimp Finish, (DIN ISO)	51.6 x 94.5	88
60-113313-A	100mL Injection Vial, Amber Glass, 1st Hydrolytic, 20mm Crimp Finish, (DIN ISO)	51.6 x 94.5	88

SEE PAGES 43 - 45 FOR OUR RANGE OF 20mm CRIMP CAPS AND SEPTA

Injection Stoppers - 20mm

Injection Stoppers for vials with 20mm crimp finish



Cat. No.	Description	Unit
60-113402	20mm Injection Stopper, Red-brown Chlorobutyl (Shore A 48)	100
60-113403	20mm Injection Stopper, Grey Chlorobutyl (Shore A 48)	100
60-113404	20mm Injection Stopper, Red-brown Bromobutyl (Shore A 45)	100
60-113405	20mm Injection Stopper, Grey Bromobutyl (Shore A 37)	100
60-113406	20mm Freeze Drying Plug, Light Grey Bromobutyl	100
60-113407	20mm Injection Stopper, Butyl/Grey PTFE (Shore A 47)	100
60-113408	20mm Ultraclean Silicone Stopper, transparent (Shore A 37)	100
60-101256	20mm Pharma-Fix Moulded Grey PTFE/Butyl Septa, 3mm (Shore A 50)	100

Flip-Off - Centre Tear-Off Crimp Caps (Tamper evident) - 20mm

Tamper Evident Crimp Caps - tear-off plastic centre part prevents unauthorised manipulation of the samples

Easier, faster and safer to open than conventional centre tear-off caps with aluminium centre part

Wide range of colours available to aid sample identification



Cat. No.	Description	Unit
60-113511	20mm Aluminium Flip-Off Crimp Cap, Centre Tear-off with Transparent Cap	100
60-113511-W	20mm Aluminium Flip-Off Crimp Cap, Centre Tear-off with White Cap	100
60-113511-Y	20mm Aluminium Flip-Off Crimp Cap, Centre Tear-off with Yellow Cap	100
60-113511-O	20mm Aluminium Flip-Off Crimp Cap, Centre Tear-off with Orange Cap	100
60-113511-R	20mm Aluminium Flip-Off Crimp Cap, Centre Tear-off with Red Cap	100
60-113511-L	20mm Aluminium Flip-Off Crimp Cap, Centre Tear-off with Lavender Cap	100
60-113511-V	20mm Aluminium Flip-Off Crimp Cap, Centre Tear-off with Violet Cap	100
60-113511-DB	20mm Aluminium Flip-Off Crimp Cap, Centre Tear-off with Dark Blue Cap	100
60-113511-B	20mm Aluminium Flip-Off Crimp Cap, Centre Tear-off with Blue Cap	100
60-113511-T	20mm Aluminium Flip-Off Crimp Cap, Centre Tear-off with Turquoise Cap	100
60-113511-DG	20mm Aluminium Flip-Off Crimp Cap, Centre Tear-off with Dark Green Cap	100
60-113511-G	20mm Aluminium Flip-Off Crimp Cap, Centre Tear-off with Green Cap	100
60-113511-YG	20mm Aluminium Flip-Off Crimp Cap, Centre Tear-off with Yellow Green Cap	100
60-113511-BK	20mm Aluminium Flip-Off Crimp Cap, Centre Tear-off with Black Cap	100
60-113511-GR	20mm Aluminium Flip-Off Crimp Cap, Centre Tear-off with Grey Cap	100

Snap Cap Vials, 18mm & 22mm Cap

Convenient and low cost storage vials with simple push-on Snap Caps

Easily opened and resealed

No liners required in the cap

Ideal for storage of powders and solids

Manufactured from 1st Hydrol Glass



Cat. No.	Description	Unit
Snap Cap Vials		
60-113601	5mL Snap Cap Vial, Clear Glass, 20 x 40mm, for use with 18mm Snap Caps	100
60-113602	10mL Snap Cap Vial, Clear Glass, 22 x 50mm, for use with 18mm Snap Caps	100
60-113603	15mL Snap Cap Vial, Clear Glass, 26 x 48mm, for use with 22mm Snap Caps	100
60-113604	25mL Snap Cap Vial, Clear Glass, 26 x 65mm, for use with 22mm Snap Caps	100

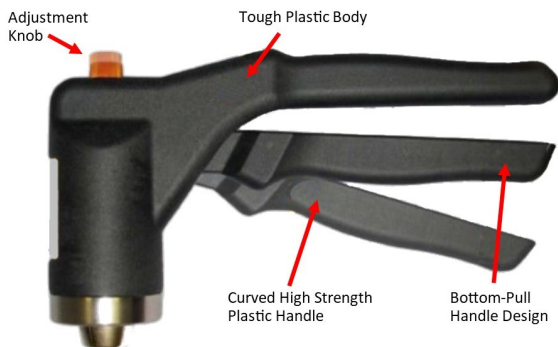


Cat. No.	Description	Unit
Snap Caps		
60-113620	18mm Snap Cap, Transparent Polyethylene, 19.8 x 5.2mm, closed top	100
60-113621	22mm Snap Cap, Transparent Polyethylene, 22 x 5.5mm, closed top	100

Cat. No.	Description	Unit
Vial Kits		
60-113600	Vial Kit - 3mL Snap Cap Vial, 19 x 30mm Clear Glass, with 18mm PE Snap Cap	200
60-113631	Vial Kit - 20ml Snap Cap Vial, 27 x 55mm, Clear Glass, with 22mm PE Snap Cap	200
60-113630	Vial Kit - 20ml Snap Cap Vial, 25 x 70mm, Clear Glass, with 22mm PE Snap Cap	200
60-113605	Vial Kit - 30ml Snap Cap Vial, 28 x 75mm, Clear Glass, with 22mm PE Snap Cap	200
60-113632	Vial Kit - 40ml Snap Cap Vial, 30 x 80mm, Clear Glass, with 28mm PE Snap Cap	200
60-113633	Vial Kit - 50ml Snap Cap Vial, 30 x 100mm, Clear Glass, with 28mm PE Snap Cap	200
60-113634	Vial Kit - 100ml Snap Cap Vial, 34 x 145mm, Clear Glass, with 28mm PE Snap Cap	100

Handy Grip™ Hand Held Crimpers & Decappers

MANUAL CRIMPERS & DECAPPERS



Features

- Curved high-strength plastic handles, greatly improve hand comfort over metal grips
- An easily-viewed adjustment knob is positioned at the head of the crimper
- It is easy to see when the crimp setting has been reached
- The bottom-pull handle design is steadier to hold than top-push handles
- Tough, light, glass filled plastic body provides strength and improves usability of the tool
- The curved high-strength handles conform to your natural hand grip
- Easily-viewed adjustment knob clearly shows + and - symbols and directional arrows. This simplifies adjusting the intensity of crimp needed
- No more “extra squeeze” necessary to ensure crimp setting is reached. This is easily viewed when the knob fully touches the body with each crimp

Part No.	Description
----------	-------------

Crimpers	
61-100020	8mm Handy Grip Manual Crimper
61-100022	11mm Handy Grip Manual Crimper
61-100026	13mm Handy Grip Manual Crimper
61-100027	13mm Handy Grip ‘Flip-off Cap’ Manual Crimper
61-100030	20mm Handy Grip Manual Crimper
61-100031	20mm Handy Grip ‘Flip-off Cap’ Manual Crimper

Decappers	
61-100024	11mm Handy Grip Manual Decapper
61-100028	13mm Handy Grip Manual Decapper
61-100032	20mm Handy Grip Manual Decapper

Part No.	Description
----------	-------------

Accessories	
61-100014	Lithium Ion Battery 6.4 Volt
61-100033	Stand for Hand and Electronic rechargeable Crimpers / Decappers

ELECTRONIC CRIMPERS & DECAPPERS



Push Button, Reliable, Reproducible Crimping

- The motor driven, Electronic Crimper crimps hundreds of vials on a single charge with just the touch of a button.
- A single press of the button both closes the crimping jaws to attach the seal and opens them to release the vials. You can also remove a seal with a single press of the operation button on the decapper version.
- Compatible with standard aluminum seals, pressure release seals, tin plated seals, bi-metallic two piece seals and ‘flip-off’ seals. (Select the proper tool according to the finish size of the vials).
- Long life lithium ion battery provides full power crimping and decapping throughout the charge cycle.

SPECIFICATIONS

- Precision, rechargeable crimpers and decappers for 8, 11, 13 & 20mm caps
- **OLED Screen Displays:**
Tool Size, Battery Status, Crimp Setting, Cycle Result
- **Settings Menu Provides:**
Lifetime Statistics, Recent Cycle Log, 8 Language Options, Reset Functions
- Brushless motor for longer life!
- Easy to use, comfortable grip
- Robust, ergonomic design for left or right handed use
- Hundreds of reproducible crimps from one charge
- Crimp force sensing assures consistent proper sealing
- Adjustable crimp settings for compatibility to most cap types

Part No.	Description
----------	-------------

Crimpers	
61-100000	8mm Electronic Crimper 6.4 Volt
61-100002	11mm Electronic Crimper 6.4 Volt
61-100004	13mm Electronic Crimper 6.4 Volt
61-100006	20mm Electronic Crimper 6.4 Volt
61-100016	13mm Electronic ‘Flip-off Cap’ Crimper
61-100018	20mm Electronic ‘Flip-off Cap’ Crimper
Decappers	
61-100008	11mm Electronic Decapper 6.4 Volt
61-100010	13mm Electronic Decapper 6.4 Volt
61-100012	20mm Electronic Decapper 6.4 Volt

Autosampler Compatibility Chart

Greyhounds ‘Q-Range’ vials are fully compatible with all the autosamplers listed in the table. Some autosamplers require the use of optional vial trays, support or occasionally programming upgrades to use all of the vials listed.

A (•) indicates that the vials from this category are compatible with the autosampler in most configurations.

Our vials are suitable for many other models of autosamplers, please contact our sales team for further information.

Manufacturer	Model	Crimp	Crimp/Snap	Screw Thread			Headspace				EPA / VOA		
	Vial Diameter (mm)	11	11	8	9	10	13	23	23	23	23	28	
	Dimensions (mm)	12 x 32	12 x 32	12 x 32	12 x 32	12 x 32	15 x 45	23 x 46	23 x 75	23 x 46	23 x 46	28 x 56 28 x 95	
	Vial Thread Finish	-	-	8-425	9-425	10-425	13-425	-	-	-	-	24-400	
	Bottom	Flat Bottom Tapered Base	Flat Bottom Tapered Base	Flat Bottom	Flat Bottom Tapered Base	Flat Bottom Tapered Base	Flat Bottom Tapered Base	Round Bottom	Round Bottom	Round Bottom	Flat Bottom	Flat Bottom	
Agilent	1050	•	•		•								
	1090	•	•		•								
	1100	•	•		•								
	1200	•	•		•								
	1260 Infinity	•			•								
	1290 Infinity	•			•								
	G1888A						•				•		
	7673A	•			•								
	7683A	•			•								
	HS7694						•				•		
	7695A											•	
	79855(A)	•	•		•								
	5880	•			•								
	5890	•			•								
	6850 (27 Pos. Tray)	•			•								
	6850 (22 Pos. Tray)						•						
	6890	•			•								
	CTC HTS+HTC PAL	•	•		•								
	CTC GC PAL	•			•								
	CTC Combi PAL								•		•		
	Tekmar SOLATek72												•
	Archon Purge + Trap												•
AQUATek 70												•	
7693A	•	•	•			•							
HS7694						•					•		
7697A											•		
Beckman Coulter	501	•	•	•	•	•							
	502/502e	•	•	•	•	•							
	507/507e	•	•	•	•	•							
	508 (System Gold)					•		•					
	Marathon	•	•	•	•								
	Promis	•	•	•	•								
	Triathlon, Standard Tray	•	•	•	•				•				
	Triathlon, LSV Tray						•						
Triathlon, Super-LSV Tray								•					
Carlo Erba	AS100	•	•	•	•								
	AS200	•		•	•								
	A200LC	•	•	•	•								
	AS200S	•		•	•								
	AS300	•	•	•	•								
	AS800, 42 vial tray	•		•	•								
	AS800, 60 vial tray	•		•	•								
	HS250							•					
	HS500							•					
	HS800							•		•			
	HS850							•		•			

Autosampler Compatibility Chart cont.

Manufacturer	Model	Crimp	Crimp/Snap	Screw Thread			Headspace				EPA / VOA	
	Vial Diameter (mm)	11	11	8	9	10	13	23	23	23	23	28
	Dimensions (mm)	12 x 32	12 x 32	12 x 32	12 x 32	12 x 32	15 x 45	23 x 46	23 x 75	23 x 46	23 x 46	28 x 56
										23 x 75	23 x 75	28 x 95
	Vial Thread Finish	-	-	8-425	9-425	10-425	13-425	-	-	-	-	24-400
	Bottom	Flat Bottom Tapered Base	Flat Bottom Tapered Base	Flat Bottom	Flat Bottom Tapered Base	Flat Bottom Tapered Base	Flat Bottom Tapered Base	Round Bottom	Round Bottom	Round Bottom	Flat Bottom	Flat Bottom
LEAP	LC PAL (216 Pos.)	•	•	•	•	•		•				
	HTX PAL, HTC PAL, HTS PAL (54/98 Pos. Tray)	•	•	•	•	•		•				
	HTX PAL, HTC PAL, HTS PAL											
	HTX PAL, HTC PAL, HTS PAL (32 Pos. Tray)									•		
	Combi PAL (98 Pos. Tray),	•			•							
	Combi PAL SPME Mode (98 Pos. Tray)	•			•							
	Combi PAL (32 Pos. Tray),							•		•		
	Combi PAL SPME Mode (32 Pos. Tray)									•		
PerkinElmer	Series 200, 85 vial tray	•				•						
	Series 200, 81/100 vial tray	•				•						
	Series 200, 205 vial tray	•				•						
	Series 200, 225 vial tray											
	AI-1	•										
	AS-100/AS-100B	•										
	AS2000/AS2000B	•				•						
	AS-300	•										
	AS8300	•										
	Autosystem	•										
	HS40/HS100/101								•			
	TurboMatrix HS16/HS40/HS40 XL/ HS40 Trap/HS110/HS110 Trap								•		•(1)	
	Integral 4000	•				•						
	ISS-100, 85 vial tray	•				•						
	ISS-100, 100 vial tray	•				•						
	ISS-200, 85 vial tray	•				•						
	ISS-200, 100 vial tray	•				•						
	ISS-225, 205 vial tray	•				•						
	ISS-225, 100 vial tray + 80 vial tray	•				•						
	ISS-225, 85 vial tray	•				•						
LC 600, 60 vial tray	•				•							
Clarus 400, 500, 600	•											
Shimadzu	AOC-5000	•			•			•		•		
	AOC-14/1400	•	•	•	•	•	•	•				
	AOC-17	•	•	•	•	•	•					
	AOC-20/20i/20s 150 Pos. Tray	•		•	•	•	•					
	AOC-20/20i/20s 96 Pos. Tray						•					
	LC-20A	•	•	•	•	•	•					
	SIL-2AS	•	•	•	•	•	•					

•(1) : for Turbomatrix 16, 40, 110 produced after 01/09/2006

Autosampler Compatibility Chart cont.

Manufacturer	Model	Crimp	Crimp/Snap	Screw Thread			Headspace				EPA / VOA		
	Vial Diameter (mm)	11	11	8	9	10	13	23	23	23	23	28	
	Dimensions (mm)	12 x 32	12 x 32	12 x 32	12 x 32	12 x 32	15 x 45	23 x 46	23 x 75	23 x 46 23 x 75	23 x 46 23 x 75	28 x 56 28 x 95	
	Vial Thread Finish	-	-	8-425	9-425	10-425	13-425	-	-	-	-	24-400	
	Bottom	Flat Bottom Tapered Base	Flat Bottom Tapered Base	Flat Bottom	Flat Bottom Tapered Base	Flat Bottom Tapered Base	Flat Bottom Tapered Base	Round Bottom	Round Bottom	Round Bottom	Flat Bottom	Flat Bottom	
Shimadzu	SIL-6A	•	•	•	•	•	•						
	SIL-6B/SIL-7A/SIL-8A/ SIL-9A	•	•	•	•	•	•						
	SIL-10A/SIL-10AF/SIL- 10AP/SIL-10Ai/SIL-10AxL/ Rack S 100 Pos.	•	•	•	•	•	•						
	SIL-10A/SIL-10AF/SIL- 10AP/SIL-10Ai/SIL-10AxL/ Rack L 80 Pos.						•						
	SIL-10HTA/SIL-10HTC 140 Pos. Tray	•	•	•	•	•	•						
	SIL-10HTA/SIL-10HTC 100 Pos. Tray						•						
	SIL-10ADvp	•	•	•	•	•	•						
	HTA 200 H									•	•		
	SIL-20A (Prominence) 105 vial tray/SIL-20AC (Prominence) 70 vial tray	•	•	•	•	•	•						
	SIL-20A/Sil-20AC (Prominence) 50 vial tray						•						
	LC2010C + LC2010A 140 Pos. Tray	•	•	•	•	•	•						
	LC2010C + LC2010A 100 Pos. Tray						•						
	ASI-V											•	
	HSS-2B						•				•	•	
	SIL 30-ACMP	•	•	•	•	•	•						
	SIL-20AXR/SIL-20ACXR (Prominence) 175 (1-mL vials), 70 (1.5-mL vials), 50 (4-mL vials)	•	•	•	•	•	•						
	SIL-30AC(Nexera) 175 (1-mL vials), 105 (1.5-mL vials), 50 (4-mL vials)	•	•	•	•	•	•						
Spark-Holland	Marathon Basic, Standard 96 Pos. Tray	•	•	•	•	•	•						
	Midas, Standard 84 Pos. Tray	•	•	•	•	•	•	•					
	Midas, Large Capacity 96 Pos. Tray	•	•	•	•	•	•						
	Midas, Large Volume 24 Pos. Tray							•					
	Alias	•	•	•	•	•	•			•			
	Promis	•	•	•	•	•	•						
	SPH 125	•	•	•	•	•	•						
	Triathlon, Standard 96 Tray	•	•	•	•	•	•						
	Triathlon, LSV 72 Pos. Tray						•						
	Triathlon, Super-LSV 32 Pos. Tray							•					
	Endurance 48 Pos. Tray	•	•	•	•	•	•						
	Reliance 48 Pos. Tray	•	•	•	•	•	•						
	Integrity	•	•	•	•	•	•						
	Prospect 2	•	•	•	•	•	•						
	Reliance/Symbiosis Pharma	•	•	•	•	•	•						
Dried Blood Spot (DBS)	•	•	•	•	•	•							
Integrity	•	•	•	•	•	•							

Autosampler Compatibility Chart cont.

Manufacturer	Model	Crimp	Crimp/Snap	Screw Thread			Headspace				EPA / VOA		
	Vial Diameter (mm)	11	11	8	9	10	13	23	23	23	23	28	
	Dimensions (mm)	12 x 32	12 x 32	12 x 32	12 x 32	12 x 32	15 x 45	23 x 46	23 x 75	23 x 46	23 x 46	28 x 56	
	Vial Thread Finish	-	-	8-425	9-425	10-425	13-425	-	-	-	-	28 x 95	
	Bottom	Flat Bottom Tapered Base	Flat Bottom Tapered Base	Flat Bottom	Flat Bottom Tapered Base	Flat Bottom Tapered Base	Flat Bottom Tapered Base	Round Bottom	Round Bottom	Round Bottom	Flat Bottom	Flat Bottom	
Spark-Holland	Integrity 108 Pos.(2ml) 2 x Plates , Integrity Plus 2 x 108 Pos.(2ml) 4 x Plates								
	Optimas	.		.	.								
	Optimas 96 Pos.(2mL) 24 Pos. (10mL)			
	Alias					
Teledyne	7000/7000HT/7050								.				
Tekmar	AQUATek 70/SOLATek 72											.	
	STS 8000 TOC											.	
	HT3								.	.			
Thermo Sci.	AS200	.		.	.								
	AS300								
	AS1000 (Trace GC)	.		.	.								
	AS2000 30 vial tray							.					
	AS2000 90 vial tray (Trace GC)	.		.	.								
	AI3000 (II)/AS3000 (II) AS3500 (Trace GC + Focus GC)	.			.			.					
	A200LC								
	SpectraSYSTEM AS 1000								
	SpectraSYSTEM AS 3000								
	SpectraSYSTEM AS 3500								
	A200S	.		.	.								
	AS100								
	AS800, 42 vial tray	.		.	.								
	AS800, 60 vial tray	.		.	.								
	Dionex AS-AP						
	Dionex UltiMate WPS-3000					
	Dionex AS 40							.					
	HS250								.				
	HS500								.				
	HS800								.		.		
	HS850								.		.		
	HS2000								.		.		
	TriPlus (=GC PAL) (AS+ Duo)		
	TriPlus HS								.		.		
	TriPlus SPME								.		.		
	TriPlus RSH		
	TriPlus 300										.		
	HiPerTOC												.
	Surveyor (Surveyor Plus)				
	Accela High Speed LC Autosampler (200 Pos.)								
	Accela Open Autosampler	.	.		.								
	Trace 1300 Series	

Autosampler Compatibility Chart cont.

Manufacturer	Model	Crimp	Crimp/Snap	Screw Thread			Headspace				EPA / VOA	
	Vial Diameter (mm)	11	11	8	9	10	13	23	23	23	23	28
	Dimensions (mm)	12 x 32	12 x 32	12 x 32	12 x 32	12 x 32	15 x 45	23 x 46	23 x 75	23 x 46 23 x 75	23 x 46 23 x 75	28 x 56 28 x 95
	Vial Thread Finish	-	-	8-425	9-425	10-425	13-425	-	-	-	-	24-400
	Bottom	Flat Bottom Tapered Base	Flat Bottom Tapered Base	Flat Bottom	Flat Bottom Tapered Base	Flat Bottom Tapered Base	Flat Bottom Tapered Base	Round Bottom	Round Bottom	Round Bottom	Flat Bottom	Flat Bottom
Varian	ProStar 400, Standard 96 Pos. Tray						
	ProStar 410, Standard 84 Pos. Tray				
	ProStar 410, Large Capacity 96 Pos. Tray						
	ProStar 410, Large Volume 24 Pos. Tray							.				
	ProStar 420, Standard 96 Pos. Tray						
	ProStar 420, LSV 72 Pos. Tray						.					
	ProStar 420, Super-LSV 32 Pos. Tray							.				
	ProStar 430, 48 Pos. Tray							
	8035			.	.							
	8000	.		.	.							
	8400 (100 Pos.)	.		.	.							
	8410-Autoinjector (10 x 2ml; 6 x 5ml; 5 x 10ml)	.		.	.							
	8100	.		.	.							
	8200						
	CP-910, 911, 912	.		.	.							
	CP-940, 941	.										
	LC 9100/LC 9095/LC 9090	.	.		.							
	Archon											.
	COMBI PAL (200 Pos. Tray)								.			
	GC PAL (200 pos. Tray)											
	COMBI PAL (98 Pos. Tray)											
	COMBI PAL (98 Pos. Tray)	.			.				.			
	GC PAL (98 Pos. Tray)	.			.				.			
	COMBI PAL SPME mode (98 Pos. Tray)	.			.				.			
	COMBI PAL (32 Pos. Tray)								.		.	
	GC PAL (32 Pos. Tray)								.		.	
	COMBI PAL SPME mode (32 Pos. Tray)								.		.	
	Genesis	.										.
	Marathon Basic, Standard 96 Pos. Tray							
	Vista			.	.							
CP-9020/CP-9025								.				
CP-9060								.				
CP-9010	.		.	.								
920-LC/940-LC		.	.									
VWR(Merck)/ Hitachi	L2200 (LaChrom Elite)/L2200-U (LaChrom Ultra)(200 Pos. Tray)		.	.	.							
	L2200 (LaChrom Elite) (128 Pos. Tray)						.					
	L7200 (LaChrom) (80 Pos. Tray)/ L7250(LaChrom) (120 Pos. Tray)		.	.	.							
	L7250 (LaChrom) (Rack Holder for combination Racks)	

Autosampler Compatibility Chart cont.

Manufacturer	Model	Crimp	Crimp/Snap	Screw Thread			Headspace				EPA / VOA	
	Vial Diameter (mm)	11	11	8	9	10	13	23	23	23	23	28
	Dimensions (mm)	12 x 32	12 x 32	12 x 32	12 x 32	12 x 32	15 x 45	23 x 46	23 x 75	23 x 46 23 x 75	23 x 46 23 x 75	28 x 56 28 x 95
	Vial Thread Finish	-	-	8-425	9-425	10-425	13-425	-	-	-	-	24-400
	Bottom	Flat Bottom Tapered Base	Flat Bottom Tapered Base	Flat Bottom	Flat Bottom Tapered Base	Flat Bottom Tapered Base	Flat Bottom Tapered Base	Round Bottom	Round Bottom	Round Bottom	Flat Bottom	Flat Bottom
VWR(Merck)	655-A40 (108 Pos. Tray)		•	•	•							
Hitachi	L-9100		•	•	•							
	AS 2000 (50 Pos. Tray)	•	•	•	•							
	AS 4000 (150 Pos. Tray)	•	•	•	•							
	5210 (Chromaster) 195 Pos. (1 mL), 120 Pos. 1.5 mL (Standard), 72 Pos. (4 mL), 2 x MTP (96,384)	•	•	•	•		•					
	AS 6000		•	•	•							
Waters	ACQUITY UPLC System				•		•**					
	Wisp 48 position						•					
	Wisp 96 position											
	717, 96 Position Carousel											
	717, 48 Position Carousel						•					
	Alliance	•	•		•	•						
	Alliance GPC 2000						•	•				
	Alliance HT Syst.	•	•		•	•						
	Alliance 2790/2795	•	•		•	•						
	Acquity Sample Organizer		•		•							
	Acquity/Cap. LC/Waters/Nano Acquity		•		•							
	Alliance 2690/2695	•	•		•	•						
	Cap LC	•		•	•	•						
	Model 2767						•					
	Model 2777	•		•	•	•						

••: for 24 Position Plate



Greyhound Chromatography shall not be liable for errors contained herein or for incidental or consequential damages in connection with the furnishing, performance, or use of this material

This information is subject to change without notice.

© Copyright Greyhound Chromatography & Allied Chemicals 2023

All rights reserved. (05/2023) E & OE V28





Simply Quality

CERTIFIED VIALS, CAPS and SEPTA



YOUR **GLOBAL SCIENCE** PARTNER

6 Kelvin Park Birkenhead Merseyside CH41 1LT United Kingdom

Tel: +44 (0) 151 649 4000 • E: info@greyhoundchrom.com • www.greyhoundchrom.com